

Screws for concrete MMS-plus

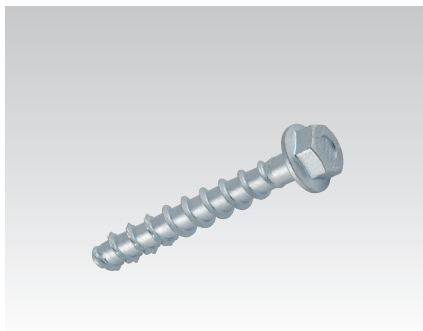
type Multi-Monti®-plus (with hexaxonal head and with panhead), galvanised

Application

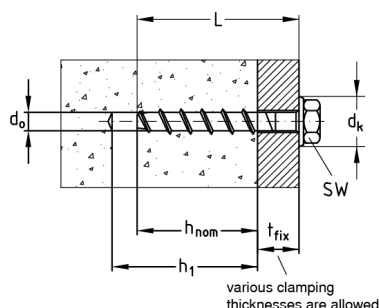
- For anchorages free of expansion pressure in cracked and non-cracked concrete
- Direct mounting of attachment parts, such as brackets, support channels, base plates, etc.
- Also applicable in lime sand brick, solid brick, clinker and natural stone
- For anchorages in prestressed concrete hollow core slab ceilings

Your advantages

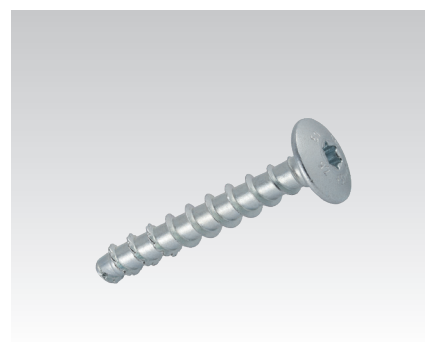
- More than 25 % reduction of assembly time per attachment point
- Versatile use in concrete and other solid building materials
- High security, no splaying effect - thus can be placed close to the edge and to other screws
- High load capacity due to form lock
- Easy to withdraw, facilitates corrections during installation
- No additional mounting or setting tools required
- European Technical Assessment for cracked and uncracked concrete
- Fire protection in concrete
- Suitable for the installation of gas mains according to the TRGI (Technical Rules for Gas Installations)
- Two effective anchorage depths for greater flexibility
- European Technical Assessment for anchorages in prestressed concrete hollow core slab ceilings
- European Technical Assessment for anchorages in masonry



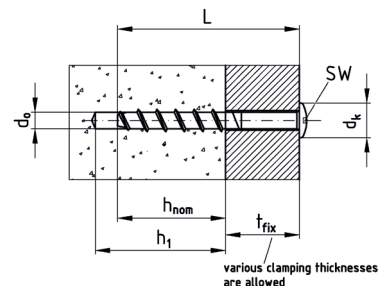
Screw for concrete with hexagonal head and pressed washer type SS



Screw for concrete with panhead (small) type P



Screw for concrete with panhead (large) type MS



Features



Standard anchorage depth


Type	Thread diameter [mm]	Length L [mm]	Spanner width SW [mm]	Clamping thickness t _{fix} [mm]	Head diameter dk [mm]	Drilling diameter d ₀ [mm]	Drilling depth h ₁ [mm]	Anchoring depth h _{nom} [mm]	Admissible tensile load cracked concrete C20/25 ¹⁾ [kN]	Admissible tensile load uncracked concrete C20/25 ¹⁾ [kN]	Part no.	Sales unit	Pack unit
With hexagonal head and pressed washer type SS	7.5	40	10	5	14	6	40	35	1	2	166632	100	Pieces
		50		15			166633	50					
		60		5			65	55	2	4.4	166634		
		80		25							166635		
		100		45							166636		
	10	70	13	5	19	8	75	65	4.4	7.9	166637	25	
		100		35							166638		
		120		55							166639		
	With panhead (small) type P	7.5	90	TX30	1	22	10	100	90	7.9	12.3	172692	
40			5		166646								
50			15		166647								
60			5		166648								
With panhead (large) type MS	7.5	40	TX30	5	17	10	65	55	2	4.4	166640	50	
		50		15			40	35	1	2	166641	100	

Screws for concrete MMS-plus

type Multi-Monti®-plus (with hexagonal head and with panhead), galvanised

Reduced anchorage depth													
Type	Thread diameter [mm]	Length L [mm]	Spanner width SW [mm]	Clamping thickness t _{fix} [mm]	Head diameter d _k [mm]	Drilling diameter d _o [mm]	Drilling depth h ₁ [mm]	Anchoring depth h _{nom} [mm]	Admissible tensile load cracked concrete C20/25 ¹⁾ [kN]	Admissible tensile load uncracked concrete C20/25 ¹⁾ [kN]	Part no.	Sales unit	Pack unit
With hexagonal head and pressed washer type SS	7.5	60	10	25	14	6	40	35	1	2	166634	50	Pieces
		80		45							166635		
		100		65							166636		
	10	70	13	20	19	8	60	50	3	5.9	166637	25	
		100		50							166638		
		120		70							166639		
	12	90	15	15	22	10	85	75	5.9	9.9	172692	50	
With panhead (small) type P	7.5	60	TX30	25	14	6	40	35	1	2	166648	50	

¹⁾ The admissible loads apply for single anchors, concrete strength class \geq C20/25 (B25), for central load without influence of axial spacing and edge spacing in cracked and uncracked concrete. The European Technical Assessment ETA-15/0784 shall be observed for dimensioning.

 For further installation parameters and loads for use in areas with requirements on the duration of fire resistance, please refer to the „Technical information“ chapter.

Installation data for anchoring in prestressed concrete hollow chamber ceilings and masonry see chapter „Technical information“.

For fitting tools please refer to chapter „Tools“.

