

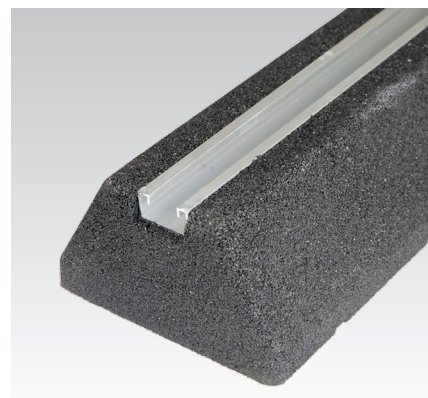
Ground consoles

Application

- Installation of pipes, external devices of air conditioners, heat pumps etc. on the ground or on flat roofs

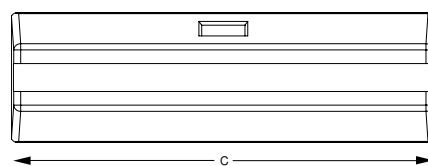
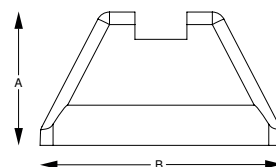
Your advantages

- Easy installation on site
- Installation without penetrating the roof membrane
- Various sizes depending on the application and load case
- Integrated aluminium rail ensures straightforward use in outdoor areas
- Deinstallation at any time



Features

Length [mm]	Material	Temperature range	Max. recommended load per piece ¹⁾ [N]
250	Recycled, UV-resistant styrene butadiene rubber	-35 °C to +80 °C	1,600
400			2,400
600			4,500
1,000			6,450



Length [mm]	Dimensions [mm]			Weight [kg]	Part no.	Sales unit	Pack unit
	A	B	C				
250	100	185	250	2.5	172844	1	Pieces
400			400	3.88	172845		
600			600	5.9	171972		
1,000			1,000	10.2	172053		

¹⁾ Wind and snow loads need to be considered.



Consoles are supplied without attachment material.

MPR-Hammer head fasteners

We recommend the following MPR-Hammer head fasteners for mounting ground consoles:

Connecting thread	Length [mm]	Part no.		
		galvanised	zinc flake coated	V4A
M10	35	151062	154198	154418
	40	151063	154199	
	55	151064	154200	
	60	151065	154201	
	80	151066	154202	
	100	151067	154203	
M12	40	151069	154204	154424
	55	151070	154205	
	60		154206	
	80		154207	
	100		154208	

