

Cramping sets type F1 AH

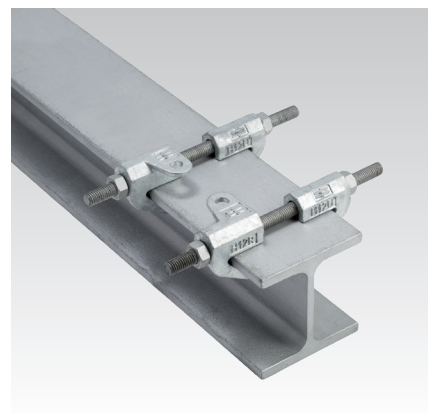
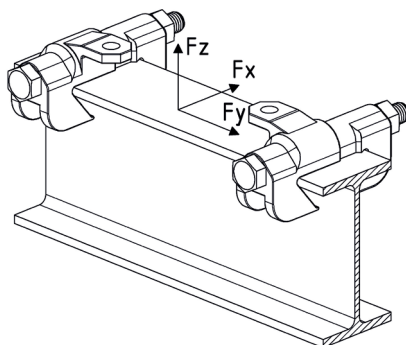
hot-dip galvanised

Application

- For attachment of pipe slide to the supporting steel structure
- Applicable as anchor point and as guidance (expansion point) with lift-off securing
- Hot-dip galvanised version for indoor and outdoor applications
- Applicable for pipe slides with a base plate thickness up to 15 mm

Your advantages

- Pre-assembled sets consisting of cramping elements and the associated threaded pins and nuts for attachment of the pipe slide to the supporting steel structure



Features

| Norm | Profile type | Cramping set short: abbreviation | | Cramping set long: abbreviation | |
|------------|--------------|----------------------------------|----------|---------------------------------|----------|
| | | min. | max. | min. | max. |
| DIN 1025-3 | HE-A | HE-A 100 | HE-A 180 | HE-A 200 | HE-A 650 |
| DIN 1025-2 | HE-B | HE-B 100 | HE-B 180 | HE-B 200 | HE-B 450 |
| DIN 1025-1 | I | I 80 | I 475 | I 500 | I 600 |
| DIN 1025-5 | IPE | IPE 80 | IPE 400 | IPE 450 | IPE 600 |
| DIN 1025-4 | HE-M | HE-M 100 | HE-M 180 | HE-M 200 | HE-M 220 |
| EN 10055 | T | T 80 | T 140 | - | - |

| Design | Flange thickness max. [mm] | Support profile width [mm] | Thread | Max. tightening torque [Nm] | Loading | | | Weight [kg] | Part no. | Sales unit | Pack unit |
|--------|----------------------------|----------------------------|--------|-----------------------------|---------------------|---------------------|---------------------|-------------|----------|------------|-----------|
| | | | | | F _x [kN] | F _y [kN] | F _z [kN] | | | | |
| short | 26 | 75 - 180 | M12 | 22 | - | ± 4 | - 5 | 1.306 | 167369 | 1 | Set |
| long | | 180 - 300 | | | | | | 1.516 | 167372 | | |



Applicable for pipe slides with a base plate thickness of up to 15 mm.

