

Cramping sets type FA and FGA

hot-dip galvanised

Application

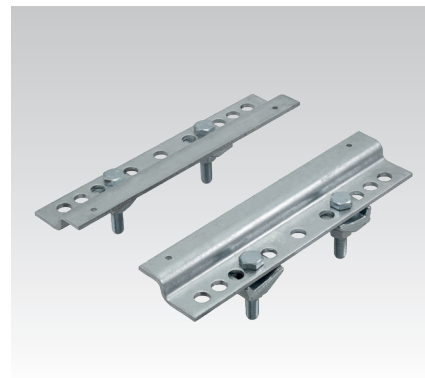
- For attachment of pipe slide to the supporting steel structure
- Applicable as guidance (expansion point) with lift-off securing
- Hot-dip galvanised version for indoor and outdoor applications
- Applicable for pipe slides with a base plate thickness up to 15 mm

Your advantages

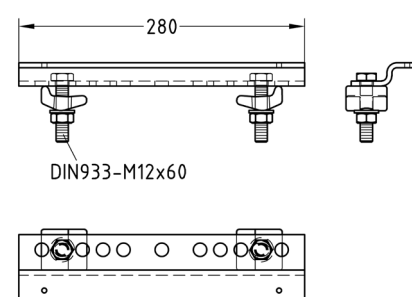
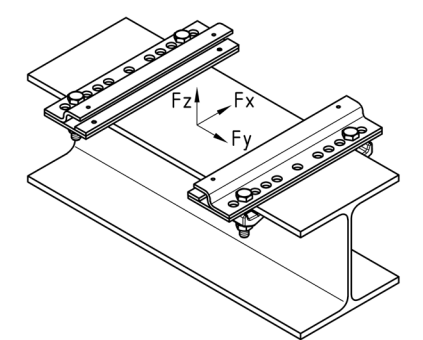
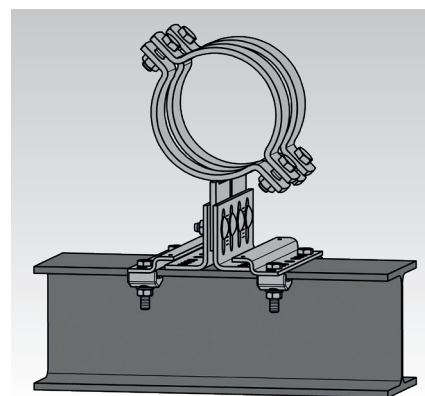
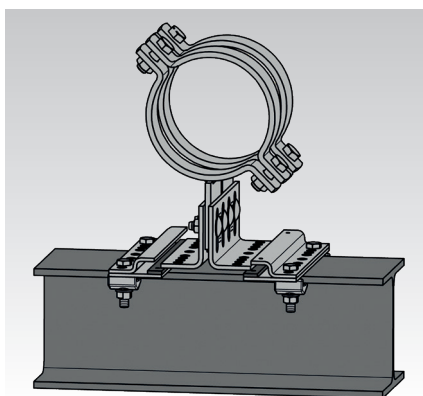
- Pre-assembled sets consisting of cramping elements and the associated threaded pins and nuts for attachment of the pipe slide to the supporting steel structure



Type FGA, with sliding plate



Type FA, without sliding plate



Features

Norm	Profile type	Abbreviation	
		min.	max.
DIN 1025-3	HE-A	HE-A 100	HE-A 180
DIN 1025-2	HE-B	HE-B 100	HE-B 180
DIN 1025-1	I	I 80	I 475
DIN 1025-5	IPE	IPE 80	IPE 400
DIN 1025-4	HE-M	HE-M 100	HE-M 180
EN 10055	T	T 80	T 140

Type	Flange thickness max. [mm]	Support profile width [mm]	Thread	Max. tightening torque [Nm]	Loading			Weight [kg]	Part no.	Sales unit	Pack unit
					Fx [kN]	Fy [kN]	Fz [kN]				
Type FA, without sliding plate	26	100 - 180	M12	22	-	± 3	± 8	2.332	169479	10	Set
Type FGA, with sliding plate								3.83	169480		

⚠ Applicable for pipe slides with a base plate thickness of up to 15 mm.