

### Cramping sets type F2 AH

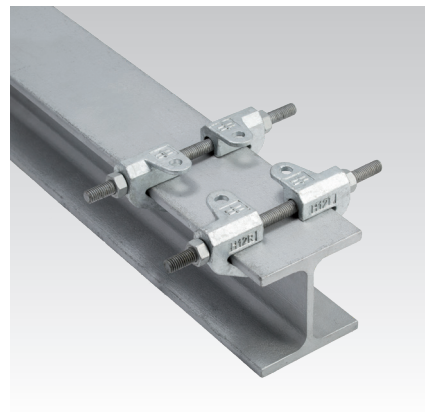
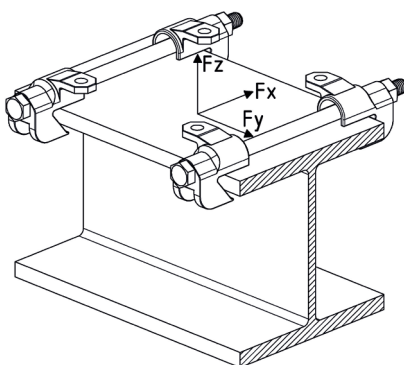
hot-dip galvanised

#### Application

- For attachment of pipe slide to the supporting steel structure
- Applicable as anchor point and as guidance (expansion point) with lift-off securing
- Hot-dip galvanised version for indoor and outdoor applications
- Applicable for pipe slides with a base plate thickness up to 15 mm

#### Your advantages


- Pre-assembled sets consisting of cramping elements and the associated threaded pins and nuts for attachment of the pipe slide to the supporting steel structure



#### Features

Norm	Profile type	Cramping set short: abbreviation		Cramping set long: abbreviation	
		min.	max.	min.	max.
DIN 1025-3	HE-A	HE-A 100	HE-A 180	HE-A 200	HE-A 650
DIN 1025-2	HE-B	HE-B 100	HE-B 180	HE-B 200	HE-B 450
DIN 1025-1	I	I 80	I 475	I 500	I 600
DIN 1025-5	IPE	IPE 80	IPE 400	IPE 450	IPE 600
DIN 1025-4	HE-M	HE-M 100	HE-M 180	HE-M 200	HE-M 220
EN 10055	T	T 80	T 140	-	-

Design	Flange thickness max. [mm]	Support profile width [mm]	Thread	Max. tightening torque [Nm]	Loading			Weight [kg]	Part no.	Sales unit	Pack unit
					Fx [kN]	Fy [kN]	Fz [kN]				
short	26	75 - 180	M12	22	-	± 4	- 10	1.4	167370	1	Set
long		180 - 300						1.61	167373		

 Applicable for pipe slides with a base plate thickness of up to 15 mm.