

Slide guide 4 kN

galvanised

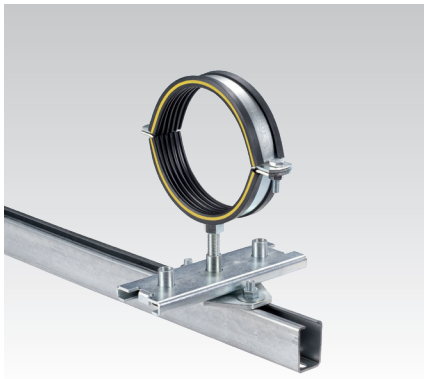
Application

- Attachment of pipes with thermal, axial expansion
- A variety of installation possibilities (floor-mount, ceiling-mount, wall-mount)
- Suitable for pipes mounted from above and from below
- Expansion assembly attachment as cross connection for pipe movement in axial and lateral directions

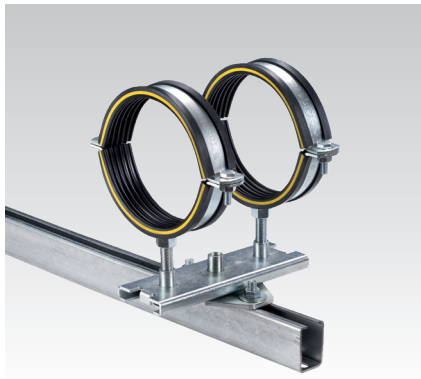
Your advantages

- Smooth-running slide guide for heavy loads
- Flat, compact design for secure mounting in cramped mounting situations
- Large slide travel of up to 216 mm

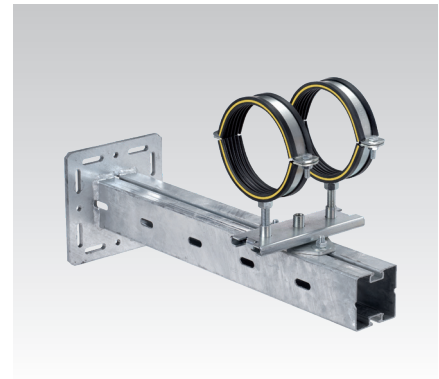
- Highly flexible use due to triple connection possibility with internal threads M12, M16 and external thread 1/2"
- One or two pipe clamps can be mounted depending on the application
- Quick and easy assembly due to center line and mounting marks
- Base plate compatible with MPC, MPR and MPT-Support channel systems
- Fire-proof design for application in escape routes and emergency routes
- For installation situations where both axial and radial movement needs to be accommodated, a 4 kN slide guide and a 4 kN adapter slide guide can be mounted together as a cross connection



Single bossed clamp mounted with a M16 connection thread to a MPC-Support channel



Two single bossed clamps with M16 connection threads mounted on a MPC-Support channel



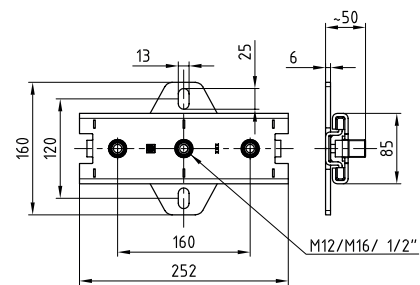
Two single bossed clamps with M16 connection threads mounted on a MPT-Console Q100

Features



Max. recommended load [N]	4,000
Temperature range	-40 °C to +100 °C

Connecting thread	Max. slide travel [mm]	Part no.	Sales unit	Pack unit
M12/M16/1/2"	216	139936	1	Pieces



Slide guide 4 kN for crisscross arrangement

galvanised

Max. slide travel [mm]	Part no.	Sales unit	Pack unit
216	139947	1	Pieces



For cross connection assembly the following components are used:

Coach bolt, DIN 603, grade 4.6, M12 x 30 mm, galvanised, part no. 143876

Hexagonal nut, DIN 934, M12, galvanised, part no. 105447

Washer, DIN 125, M12, galvanised, part no. 127286