

Slide guides 2.3 kN

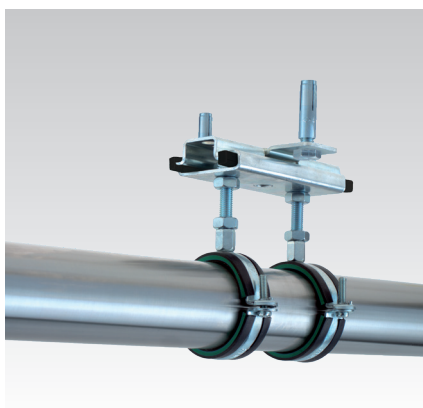
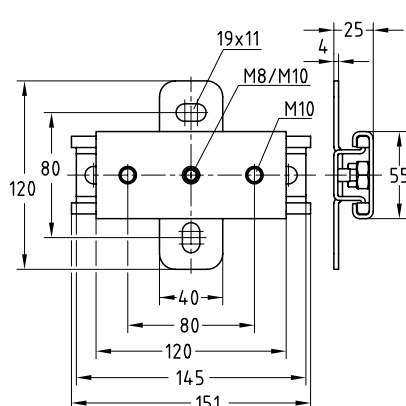
stainless steel

Application

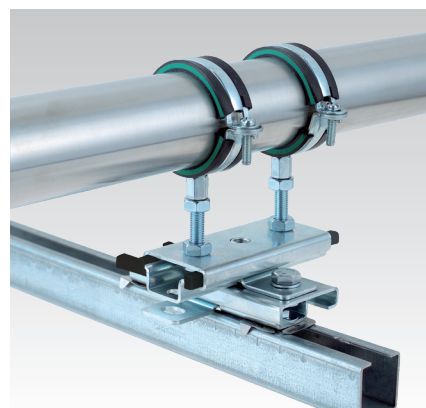
- Attachment of pipes with thermal, axial expansion
- A variety of installation possibilities (floor-mount, ceiling-mount, wall-mount)
- Suitable for pipes mounted from above and from below
- Expansion assembly attachment as cross connection for pipe movement in axial and lateral directions

Your advantages

- Flat, compact design for secure mounting in cramped mounting situations
- Large slide travel of up to 76 mm
- High-level application flexibility due to triple connection facilities for pipe clamps
- One or two pipe clamps can be mounted depending on the application



Ceiling installation with steel anchors M8



Upright installation of two slide guides in crisscross arrangement, on a MPC-Support channel

Features



Max. recommended load [N]	2,300
Temperature range	-40 °C to +100 °C

Connecting thread	Max. slide travel [mm]	Material V2A Part no.	Material V4A Part no.	Sales unit	Pack unit
M8/M10	76	148349	148345	25	Pieces