

Box-section heavy slide guide 7.8 kN

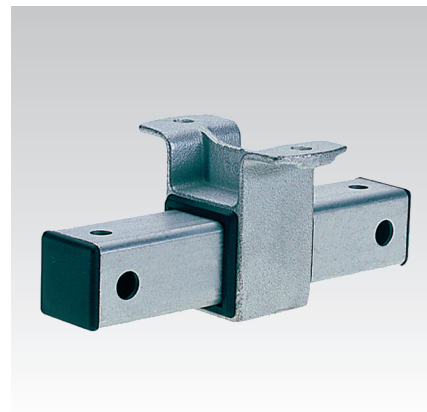
galvanised

Application

- Suitable for wall fixing with horizontal or vertical pipes
- Attachment of pipes with thermal, axial expansion
- Variety of installation possibilities (floor-mount, ceiling-mount, wall-mount, rail-mount, cross stay)
- Suitable for pipes mounted from above and from below

Your advantages

- Smooth-running slide guide for heavy loads
- With long slide travel up to 125 mm for pipelines with large changes in length
- Tilt-proof load distribution in standing and suspended installations
- Variable, height-adjustable pipe clamp attachments using threaded pins
- Two pipe clamps prevent jamming and misalignment
- Connection holes for M12 and M16

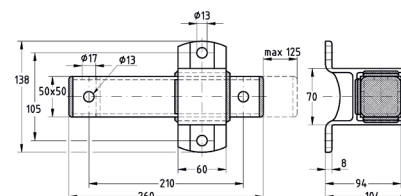


Features



Max. recommended load [N]

7,800



Max. slide travel [mm]	Part no.	Sales unit	Pack unit
125	105309	1	Pieces



Also available in stainless steel version upon request.