

### Sliding stirrups

galvanised

#### Application

- Expansion point attachment for suspended pipes
- Suitable for direct ceiling installations and for attachment to MPC-Support channels using rail nuts
- Attachment of pipes with thermal, axial expansion

#### Your advantages

- Prevents any force build-up at the attachment point in case of changes in pipe length
- If mounted reciprocally, an axial synchronous ganging of the pipes is ensured
- Smooth and silent movement due to the large roller
- Can be swivelled laterally, therefore especially useful near pipe side-branches



Sliding stirrups XL

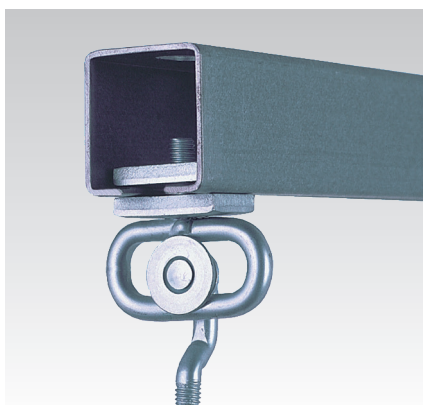
- Removable roller to facilitate screwing in



Sliding stirrups



Fixing with steel anchor



Attachment on a MPC-Support channel

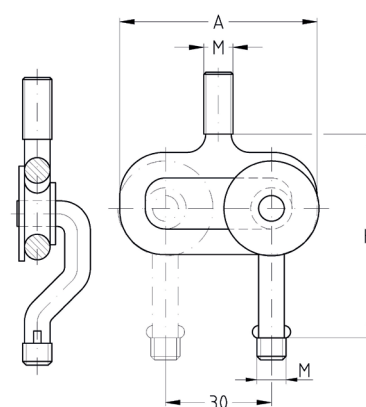


Sliding stirrup in combination with a single bossed clamp

#### Features



Connecting thread	Max. recommended load [N]
M8	400
M10	650



Type	Connecting thread	Max. slide travel [mm]	Height adjustment up to [mm]	Dimensions [mm]		Part no.	Sales unit	Pack unit
standard	M8	30	-	A	H	118344	50	Pieces
	M10			55	52	118340		
XL			32	68	60	137991	25	