

Guide rails galvanised

Application

- Ideally suitable for pipes with large thermal, axial expansion
- Suitable for ceiling, suspension, risers and ground installations

Your advantages

- Guide rail with long slide travel for versatile installation
- Perfect solution for installation under cramped conditions due to the low overall height of 28 mm (guide rail M8)
- Smooth-sliding, abrasion-resistant sliding shoe

Features

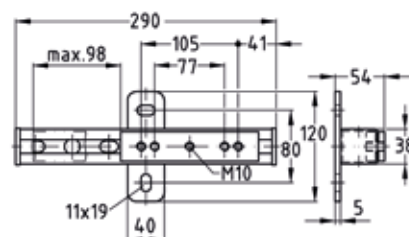
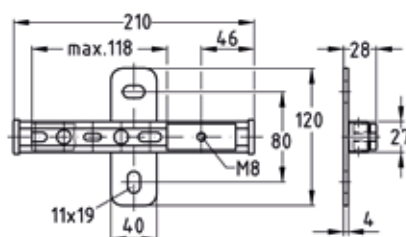
Max. recommended load [N] 1,000



Guide rail M8



Guide rail M10



Connecting thread	Max. slide travel [mm]	Part no.	Sales unit	Pack unit
M8	118	112066	1	Pieces
M10	98	112062		

! Attention: Comply with the tightening torque specified for the locknuts: Connecting thread M8 16 Nm, connecting thread M10 18 Nm.