

### Sliding shoes

#### Application

- Perfect solution for plastic pipes with large sliding movement
- Ideally suitable for riser pipes
- Suitable for pipes mounted from above and from below
- Attachment of pipes with thermal, axial expansion
- Expansion assembly attachment as cross connection for pipe movement in axial and lateral directions

#### Your advantages

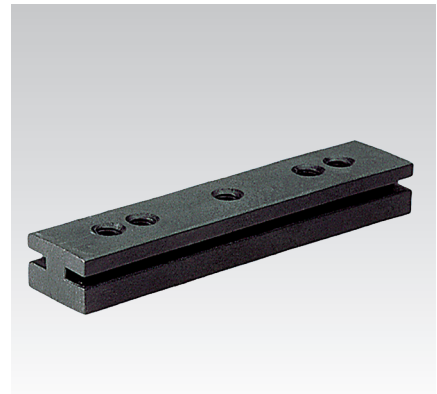
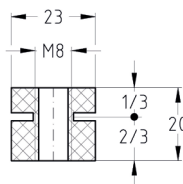
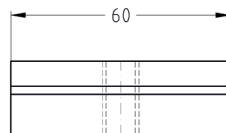
- Length of sliding distance can be freely determined by suitable selection of support channel length
- Large pipework movements in both axial and lateral directions can be accommodated by a module consisting of two sliding shoes, giving a low overall height of only 50 mm (for channel 27/18)
- High load carrying capacity and abrasion-resistant sliding shoe made of Ultramid, reinforced with glass fibre

#### Features

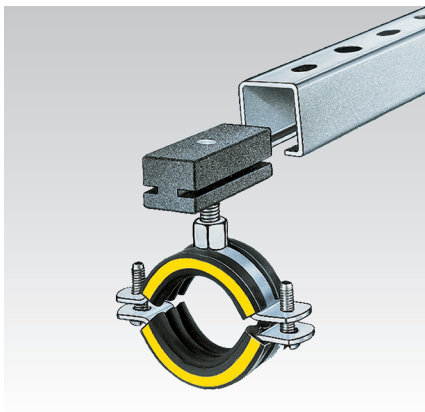
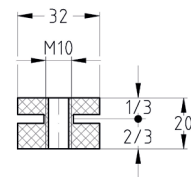
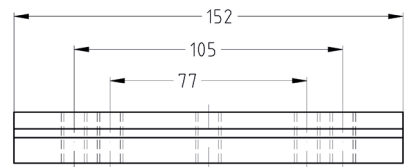
Max. recommended load [N]	1,000
---------------------------	-------



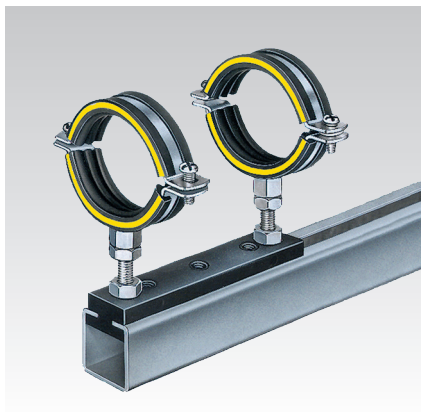
Sliding shoe M8



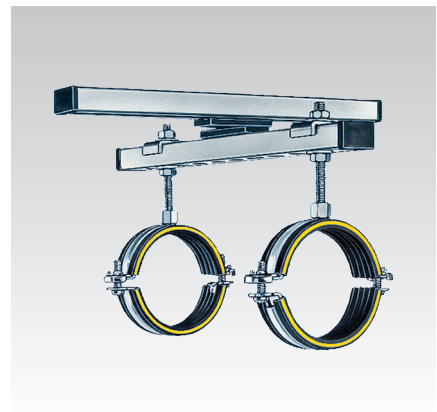
Sliding shoe M10



Sliding shoe M8 as suspended attachment



Sliding shoe M10 as standing support



Sliding attachment for pipe movement in axial and lateral directions

Connecting thread	For profiles	Part no.	Sales unit	Pack unit
M8	27/18, 28/30	112056	1	Pieces
M10	38/40, 39/52, 40/60, 40/80, 38/80, 40/120	112052		

**!** When installed, the threaded pin must be fully screwed through the sliding shoe. When attached in combination with a pipe clamp, the threaded pin must not protrude more than 70 mm (M8) or 100 mm (M10).

**Attention:** Mind the tightening torque specified for the locknuts: Connecting thread M8 16 Nm, connecting thread M10 18 Nm.