

### STATO® Brackets

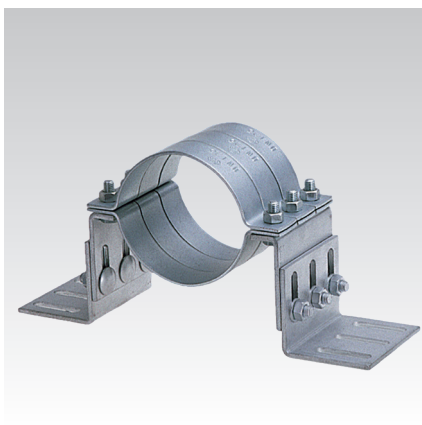
hot-dip galvanised

#### Application

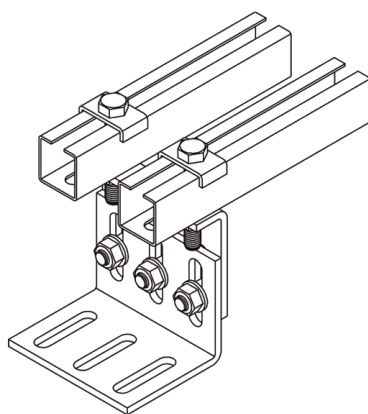
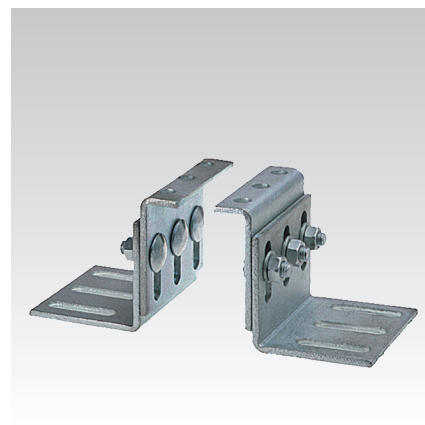
- Stable support system with high load-bearing capacity for pipe installations
- Ideal pipe anchor point in combination with STATO® Clamps without lining
- Ideal as height adjustable subframe for anchor and expansion assemblies
- Ideal as an anchor point for insulated chilled water pipes in combination with MÜPRO® Wooden blocks and STATO® Clamps

#### Your advantages

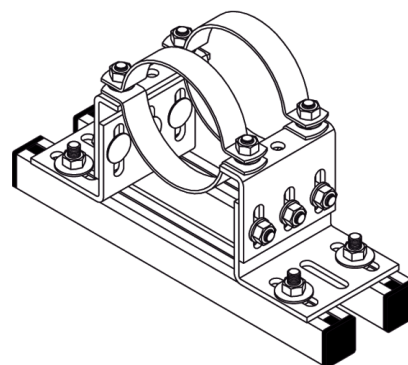
- Continuously adjustable in height and slope
- As height adjustment for waste water pipes or to compensate for unevennesses
- Can be fitted with up to 3 STATO® Clamps in case of heavy loads
- Especially suitable for heavy pipes with large wall clearances
- Can be used as a bearing block, adjustable in height and slope



STATO® Clamps with adjustable STATO® Bracket

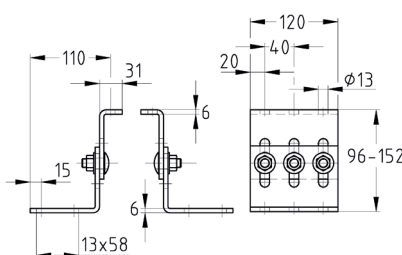


Height adjustable sub-frame for anchor and expansion assemblies

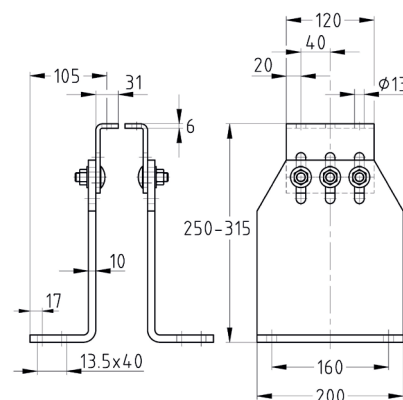


Free slidable elevation

STATO® Brackets 1 kit consisting of:  
4 STATO® Angle pieces,  
6 Coach bolts M12,  
6 Hexagonal nuts M12,  
6 Washers for M12.  
All parts are hot-dip galvanised.



Standard version

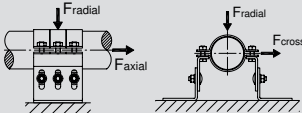


Heavy-duty version, larger distance from structure

Design	Overall height [mm]	Adjustment range [mm]	Part no.	Sales unit	Pack unit
Standard version	96 - 152	56	129168	1	Pieces
Heavy-duty version	250 - 315	65	129172		

⚠ STATO® Clamps in hot-dip galvanised version upon request.

STATO® Brackets  
hot-dip galvanised

Features				
Design		Standard version	Heavy-duty version	Tightening torque [Nm]
				valid for M12, steel pipes without coating
<div>Max. recommended load [N]</div> <div></div>	axial	5,500 per clamp	5,500 per clamp	75
	cross	Overall height min.		
		8,000	7,000	
		Overall height max.		
		6,000	7,000	
	radial	25,000	25,000	

VIDEO TIP

 **Installation of anchor points with MÜPRO STATO® brackets:** the video shows the installation options in industrial settings and plant design and explains the individual installation steps.

