

STATO® Brackets galvanised

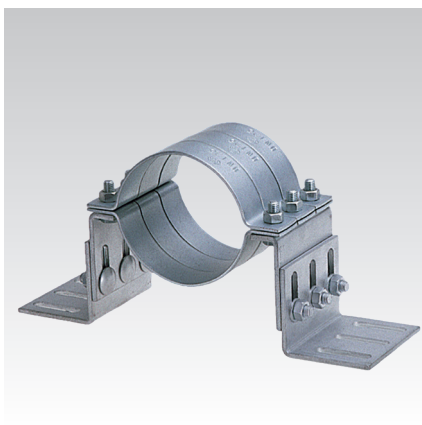
Application

- Stable support system with high load-bearing capacity for pipe installations
- Ideal pipe anchor point in combination with STATO® Clamps without lining
- Ideal as height adjustable subframe for anchor and expansion assemblies
- Ideal as an anchor point for insulated chilled water pipes in combination with MÜPRO® Wooden blocks and STATO® Clamps

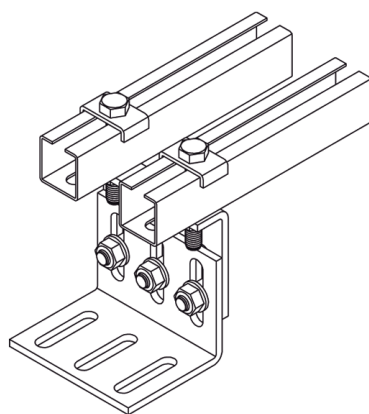
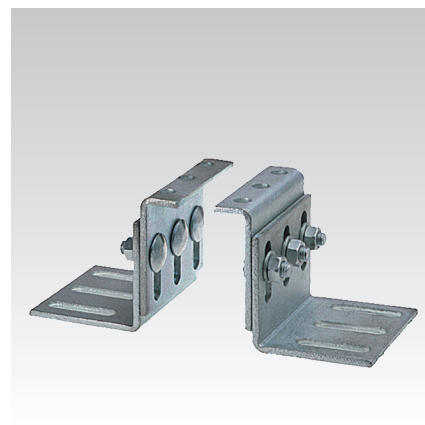
Your advantages

- Continuously adjustable in height and slope
- As height adjustment for waste water pipes or to compensate for unevennesses
- Can be fitted with up to 3 STATO® Clamps in case of heavy loads
- Especially suitable for heavy pipes with large wall clearances
- Can be used as a bearing block, adjustable in height and slope

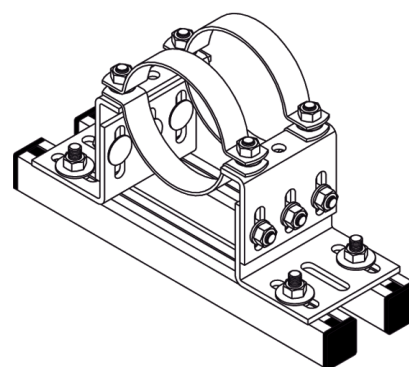
STATO® Brackets 1 kit consisting of:
4 STATO® Angle pieces,
6 Coach bolts M12,
6 Hexagonal nuts M12,
6 Washers for M12.
All parts are galvanised.



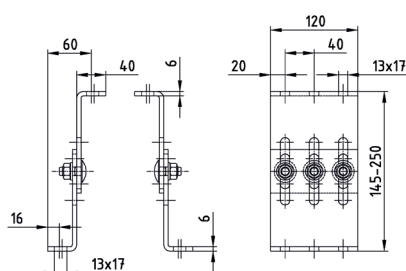
STATO® Clamps with adjustable
STATO® Bracket



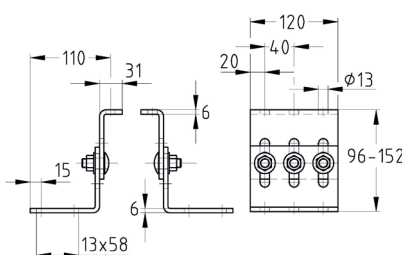
Height adjustable sub-frame for anchor
and expansion assemblies



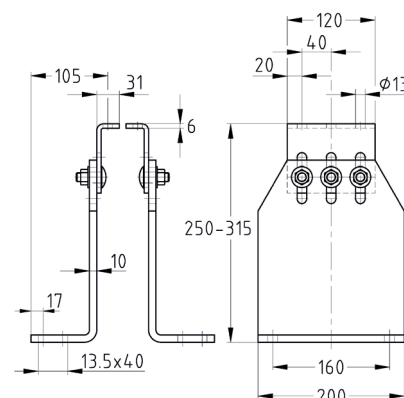
Free slidable elevation



Slim version



Standard version



Heavy-duty version,
larger distance from structure


Design	Overall height [mm]	Adjustment range [mm]	Part no.	Sales unit	Pack unit
Slim version	145 - 250	105	129171	1	Pieces
Standard version	96 - 152	56	129167		
Heavy-duty version	250 - 315	65	129176		

STATO® Brackets

galvanised

Features						
Design		Slim version	Standard version	Heavy-duty version	Tightening torque [Nm] valid for M12, steel pipes without coating	
Max. recommended load [N]	axial	5,500 per clamp	5,500 per clamp	5,500 per clamp	75	
	cross	Overall height min.				
		6,000	8,000	7,000		
		Overall height max.				
	radial	3,000	6,000	7,000		
		Overall height min.	25,000	25,000		
		20,000				
		Overall height max.				
		10,000				

VIDEO TIP

 **Installation of anchor points with MÜPRO STATO® brackets:** the video shows the installation options in industrial settings and plant design and explains the individual installation steps.

