

Supporting angle

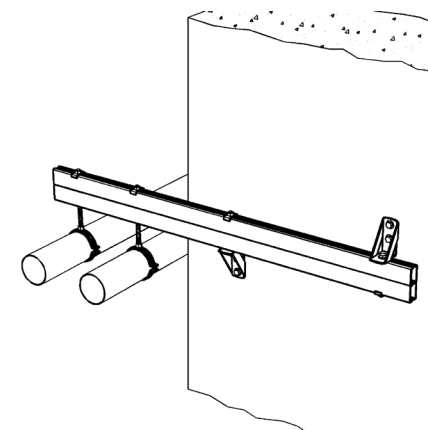
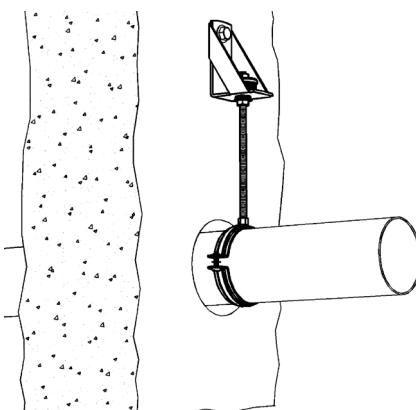
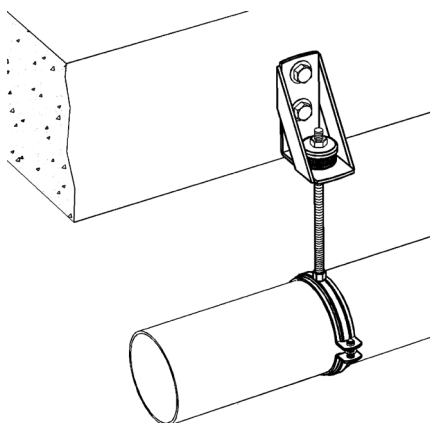
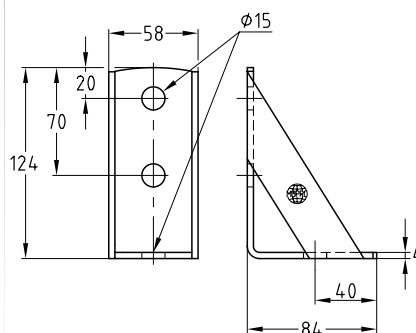
hot-dip galvanised

Application

- For lateral suspension of pipelines on reinforced concrete beams
- As substructure for the attachment of fittings, e.g. water meters

Your advantages

- Angle element for higher requirements for stability of mounting structures
- Usable as bracket for supporting heavy loads close to a wall
- For supporting cross-beams in confined spaces



Features

Max. recommended load [N]

5,000

Design	Part no.	Sales unit	Pack unit
without DÄMMGULAST® Resilient pad	127801	1	Pieces

