

### Girder clamps

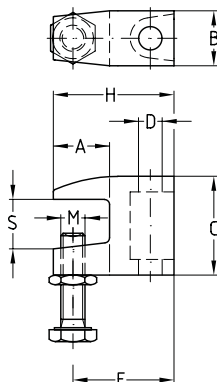
stainless steel

#### Application

- For attachment of pipelines, air ducts and sprinkler systems on steel girders without welding or drilling

#### Your advantages

- Attachment on girder without welding or drilling
- Subsequent alignment on the girder possible
- Quick, subsequent height adjustment of the threaded rods at the non-threaded through-hole
- High loading capacity
- For suspension of threaded pins and threaded rods for the attachment of pipe clamps or crossbeams made with MPC-Support channels



#### Features

Size	Max. recommended load [N]
M8	1,200
M10	1,800
M12	2,000

Size	Clamping thickness S [mm]	Dimensions [mm]							Material V2A	Material V4A	Sales unit	Pack unit
		A	B	C	D	E	H	M	Part no.	Part no.		
M8	0 - 16.5	21.5	22	38	9	34	41.5	M10	130246	130245	1	Pieces
M10					11				130235	130249		
M12					13				130239	130254		

