

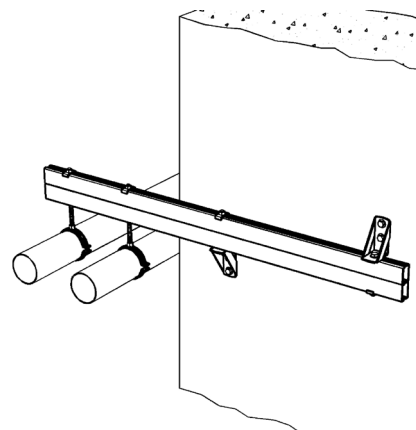
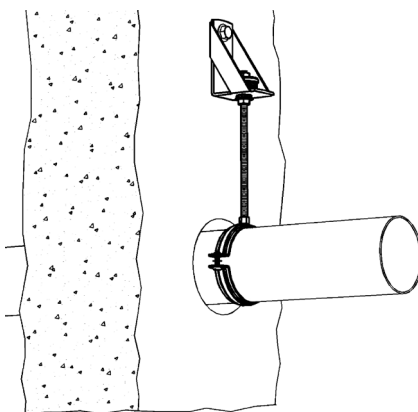
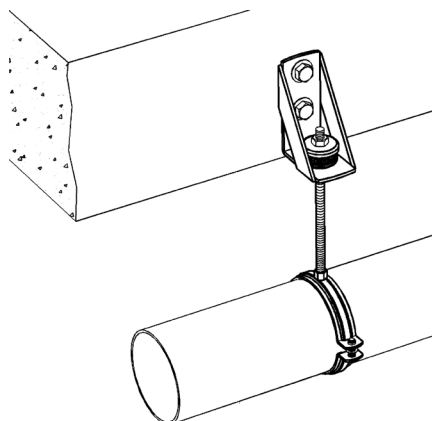
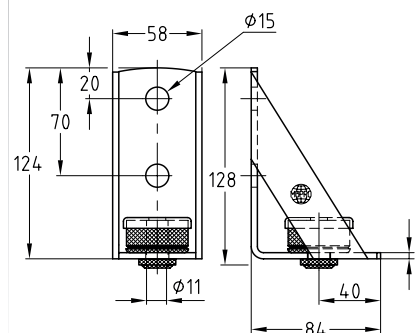
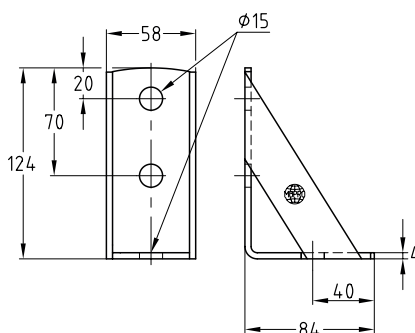
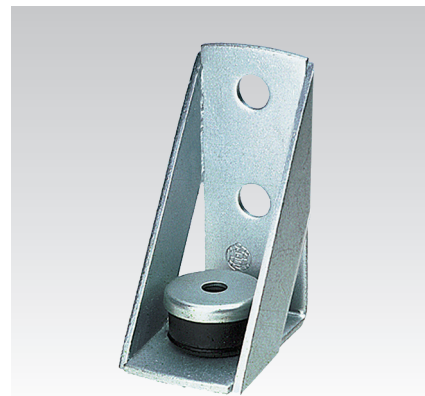
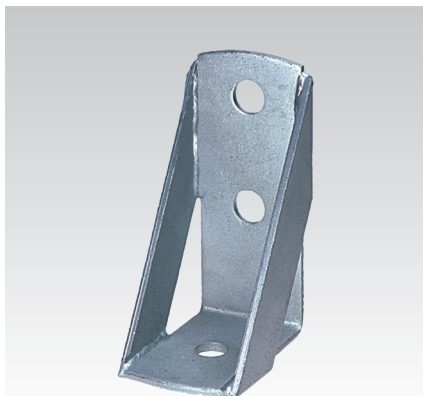
Supporting angles galvanised

Application

- For lateral suspension of pipelines on reinforced concrete beams
- As substructure for the attachment of fittings, e.g. water meters

Your advantages

- Angle element for higher requirements for stability of mounting structures
- With high-quality vibration control of DÄMMGULAST® Resilient pad
- Usable as bracket for supporting heavy loads close to a wall
- For supporting cross-beams in confined spaces



Features



| Design | Max. recommended load [N] | Average vibration reduction [dB(A)] |
|-----------------------------------|------------------------------|--|
| with DÄMMGULAST® Resilient pad | 1,000 | 17 |
| without DÄMMGULAST® Resilient pad | 5,000 | - |

| Design | Part no. | Sales unit | Pack unit |
|-----------------------------------|----------|------------|-----------|
| with DÄMMGULAST® Resilient pad | 127789 | 10 | Pieces |
| without DÄMMGULAST® Resilient pad | 127792 | | |