

## Clamping claws

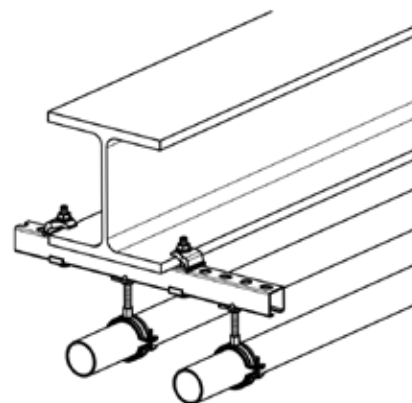
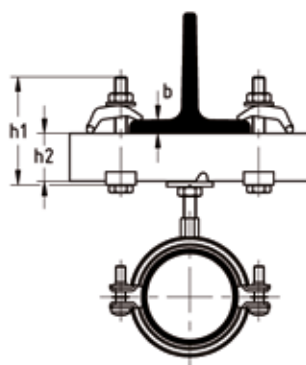
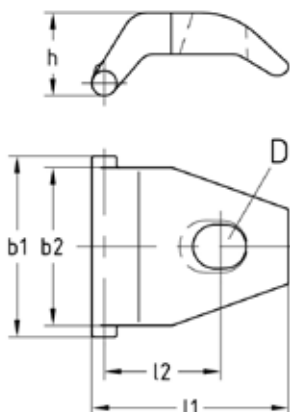
galvanised

### Application

- Attachment of MPC- and MPR-Support channels to profile steel structures without drilling or welding

### Your advantages

- Large clamping range for universal and quick attachment to profile steel structures
- Safe fastening without drilling or welding
- Suitable for attaching square pipes



### Features

Size	Max. admissible load/pair [N]	Breaking load [N]
M10	7,000	45,000
M12	10,000	80,000
M16	12,000	90,000

Size	Max. clamping range b	Screw length h1	Dimensions [mm]						Part no.	Sales unit	Pack unit
			b1	b2	D	h	l1	l2			
M10	1-25 mm	b + h2 + 33 mm	43	38	11	19	47	28	157219	100	Pieces
M12	1-35 mm	b + h2 + 40 mm	51		13	27	66	37	157220	50	
M16		b + h2 + 43 mm	63	46	17	29	65		157221		



Installation of the clamping claw with the wide side facing the support channel.