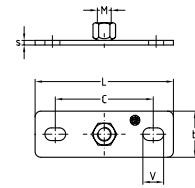


### Base plates with nut

with two oblong holes, stainless steel

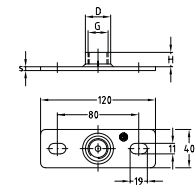
Size	Thread	Oblong hole V	Hole-centre distance C [mm]	Dimensions [mm]			Material V2A Part no.	Material V4A Part no.	Sales unit	Pack unit
				L	b	s				
1	M8	9 x 16 mm	54	80	30	3	112405	112379	1	Pieces
	M10						112393	112373		
	M12						112399	112377		
2	M8	11 x 19 mm	80	120	40	4	112465	112427	1	Pieces
	M10						112449	112415		
	M12						112457	112421		
	M16						112461	112425		



### Base plates with connection socket

welded around, with two oblong holes, stainless steel

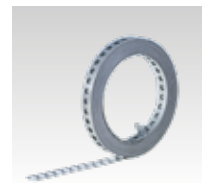
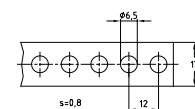
Size	Thread	Oblong hole V	Hole-centre distance C [mm]	Dimensions [mm]			Material V2A Part no.	Material V4A Part no.	Sales unit	Pack unit
				L	b	s				
2	1/2"	11 x 19 mm	80	120	40	4	112431	112411	1	Pieces
	3/4"						112441	112413		
	1"						112429	112409		




### Punched tapes

straight edges, stainless steel

Length [m]	Hole diameter [mm]	Hole spacing [mm]	Width [mm]	Material	Part no.	Sales unit	Pack unit
10	6.5	12	17	V2A	114792	1	Roll
50					114795		



 Rolls of 50 m are supplied in a practical dispenser case.

### Threaded pipes

stainless steel

Thread	Length [mm]	Material	Part no.	Sales unit	Pack unit
1/2"	1,000	V4A	105145	1	Pieces
3/4"			113417		
1"			113369		

