

### Turnbuckles

DIN 1480, hot-dip galvanised

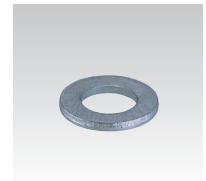
Thread	Length [mm]	Adjustment range [mm]	Part no.	Sales unit	Pack unit
M12	125	80	125010	1	Pieces
M16	170	110	125016		



### Washers

DIN 125, hot-dip galvanised

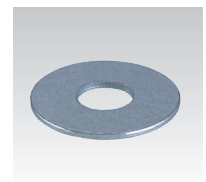
For thread	Outer diameter [mm]	Inner diameter [mm]	Thickness [mm]	Part no.	Sales unit	Pack unit
M8	16	8.4	1.6	127346	1	Pieces
M10	20	10.5	2	127318	100	
M12	24	13	2.5	127325		
M16	30	17	3	127328		



### Washers

for MPC-Support channels, hot-dip galvanised

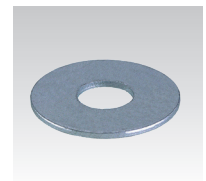
For thread	Outer diameter [mm]	Inner diameter [mm]	Thickness [mm]	Part no.	Sales unit	Pack unit
M8	24	8.4	2	162200	1	Pieces
M10	30	10.5	2.5	132832		



### Washers

for MPR-Support channels, mechanically galvanised

For thread	Outer diameter [mm]	Inner diameter [mm]	Thickness [mm]	Part no.	Sales unit	Pack unit
M8	40	8.4	3	154239	100	Pieces
M10		10.5		154240		
M12		13		154241		
M16		17		154242	50	



### Link chain

DIN 763, hot-dip galvanised

Size	Length [m]	Part no.	Sales unit	Pack unit
4 x 32 mm	30	112096	1	Roll

