

Round connector

acc. to DIN EN 10241, galvanised

Application

- Connecting element for the combination of slide guides 4.0 kN and threaded pipes 1/2"
- For the extension and joining of threaded pipes

Your advantages

- Ideal combination of round connector and threaded pipe for a rigid attachment with greater distance from building structure
- Fast and easy extension and joining of threaded pipes
- Stable, galvanised round connector according to DIN EN 10241



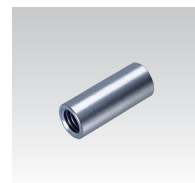
Thread	Length [mm]	Outer diameter [mm]	Part no.	Sales unit	Pack unit
1/2"	34	26.6	147091	1	Pieces



Round connectors

for joining or connecting threaded items, galvanised

Thread	Length [mm]	Outer diameter [mm]	Part no.	Sales unit	Pack unit
M6	30	10	113248	100	Pieces
M8	20	11	113254		
	30		113259		
	40		113274		
	50		113283		
M10	30	13	113175		
	40		113190		
M12	30	15	113196		
	40		113205		
	55		113220		



Parallel couplings

for threaded rods or threaded pins, galvanised

For thread	Length [mm]	Max. recommended load [N]	Part no.	Sales unit	Pack unit
M8	35	1,000	120137	100	Pieces
M10		1,500	120141	50	

