

### MPT-Support profile connectors

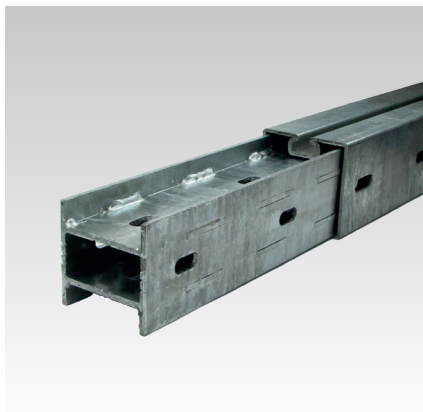
hot-dip galvanised

#### Application

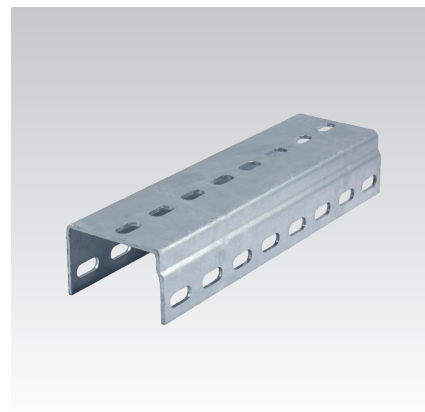
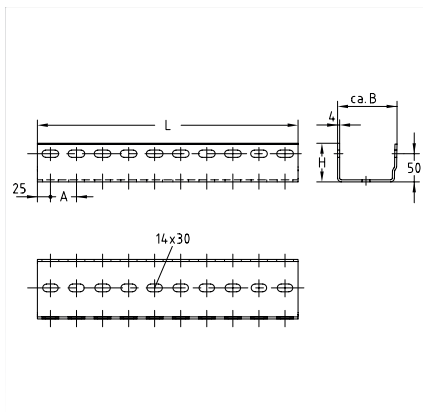
- Axial connection of MPT-Support profiles

#### Your advantages

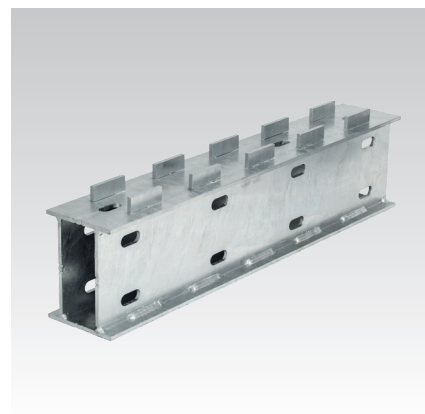
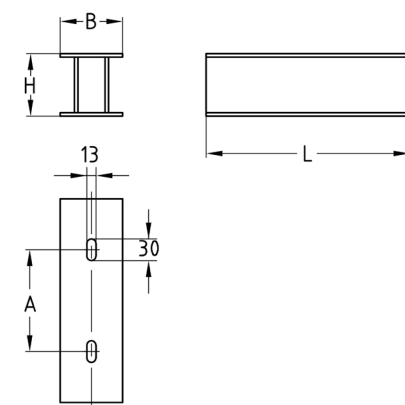
- Safe and form-locking connection of MPT-Support profiles by inserting the support profile connection into the ends of the support profiles to be connected (Q80 and Q150) or by connecting from outside (Q100)
- High corrosion protection due to standardised hot-dip galvanising ensures flexible implementation outdoors and indoors



For profile Q80



For profile Q100



For profile Q80, Q150,  
schematic sketch (original may vary)

For profile Q150

For profiles	Length L [mm]	Dimensions [mm]			Weight [kg]	Part no.	Sales unit	Pack unit
		A	B	H				
Q80-2.0	550	150	73	73	3.239	167938	1	Pieces
Q100-2.5, Q100-3.5	500	50	115	74	7.14	176056		Set
Q150-2.5	550	150	92	140	9.25	167077		Pieces



Article 176056 is supplied in a set with two U-profiles.