

## MPT-Saddle supports

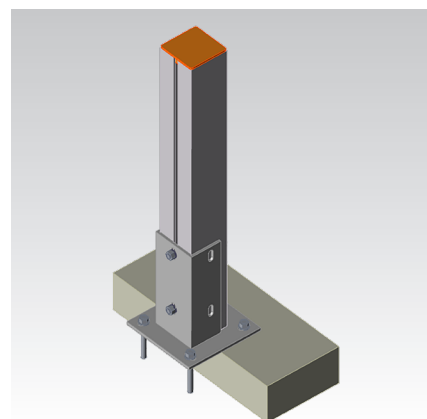
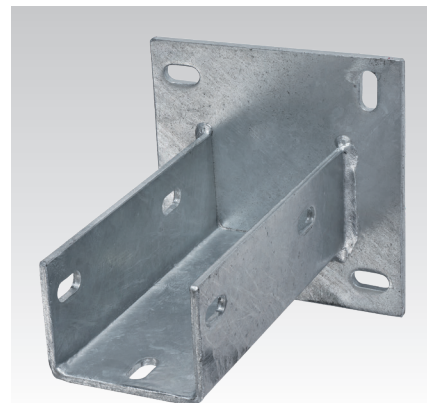
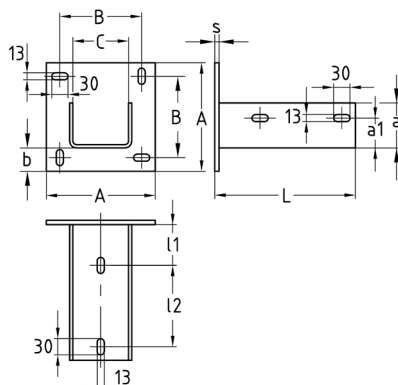
hot-dip galvanised

## Application

- Stable saddle supports in three sizes for accommodating MPT-Support profiles Q50, Q80, Q100 or Q150 for wall, floor, and ceiling connection

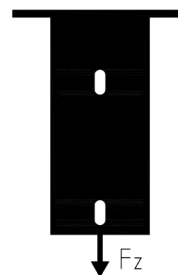
## Your advantages

- For fast and efficient mounting of cross-beams of MPT-Support profiles
- Stable baseplate for safe fastening on the structural element
- Standardised hot-dip galvanising for flexible implementation outdoors and indoors
- Fully welded version of the grooved support saddle ensures high dimensional stability of the flange



## Features

| For profiles                 | Max. recommended tensile load $F_z$ [N] | Tightening torque [Nm] |
|------------------------------|---|------------------------|
| Q50-2.5                      | 12,500                                  | 65                     |
| Q80-2.0                      |   |                        |
| Q100-2.5, Q100-3.5, Q150-2.5 | 15,000                                  |                        |



| For profiles                 | Dimensions [mm] |    |    |    |     |   |     |     |     |     | Weight [kg] | Part no. | Sales unit | Pack unit |
|------------------------------|-----------------|----|----|----|-----|---|-----|-----|-----|-----|-------------|----------|------------|-----------|
|                              | a               | a1 | b  | l1 | l2  | s | A   | B   | C   | L   |             |          |            |           |
| Q50-2.5                      | 57              | 37 | 72 | 75 | 150 | 8 | 200 | 150 | 102 | 258 | 4.85        | 131837   | 1          | Pieces    |
| Q80-2.0                      | 73              | 47 | 43 |    |     |   | 180 | 130 | 82  |     | 4.478       | 167934   |            |           |
| Q100-2.5, Q100-3.5, Q150-2.5 | 83              | 54 |    |    |     |   | 200 | 150 | 102 |     | 5.55        | 131635   |            |           |