

Angle- and T-connection plates

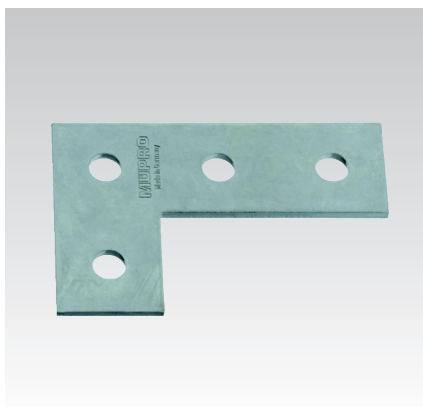
hot-dip galvanised

Application

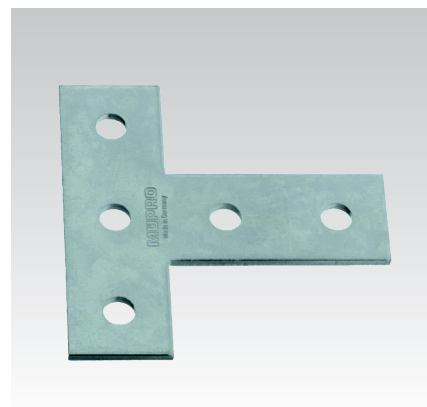
- Strong connection elements for frames and pre-wall installations using the MPC- and MPR-System components
- Suitable for outdoor use

Your advantages

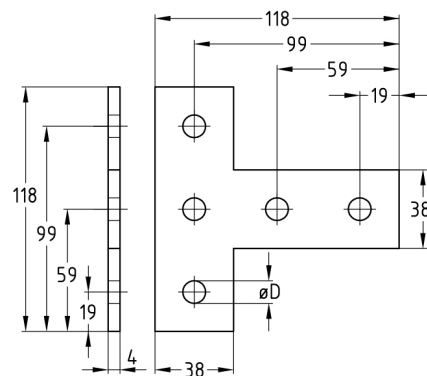
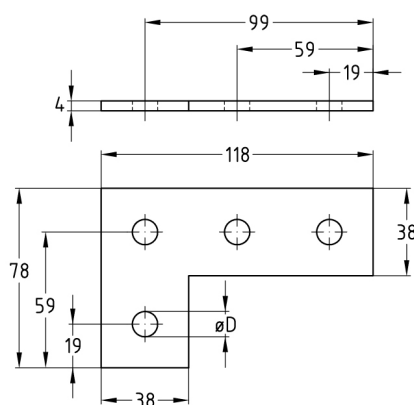
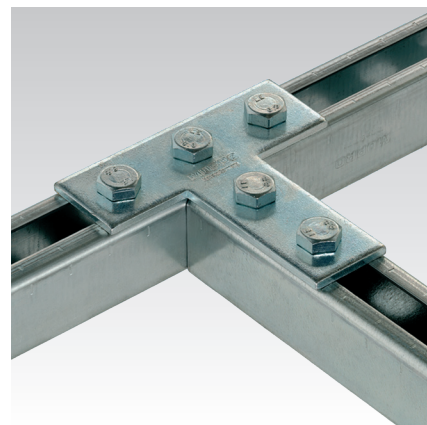
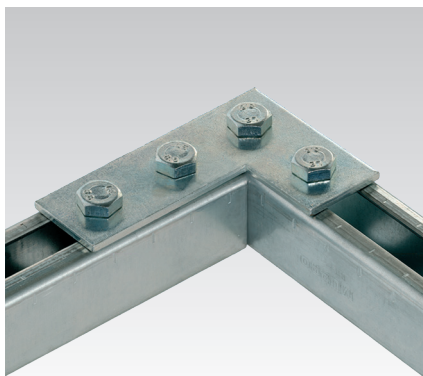
- Simple and quick connection of angles and T-connections
- The mounting plates enable frame construction in one plane in which the channel slots have the same alignment
- Good adaptation to rail widths; in the case of frame constructions, the corners remain free
- Quick and simple attachment in combination with the MPC-Quick fastener for angle mounting
- Hole spacings allow pass-through mounting using the MPC- and MPR-Support channels



Angle plate



T-connection plate



Type	For profiles	Hole diameter [mm]	Part no.	Sales unit	Pack unit
Angle plate	38/40-40/120, 41/21-41/124	11	127849	25	Pieces
T-connection plate			130299		