

Reinforcement angle

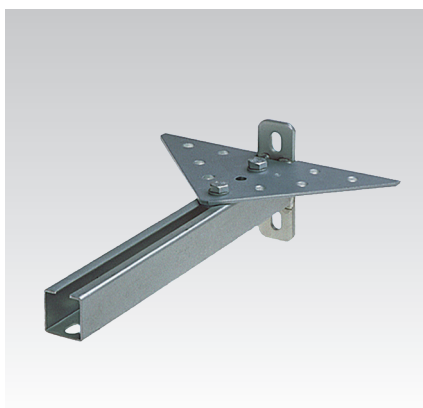
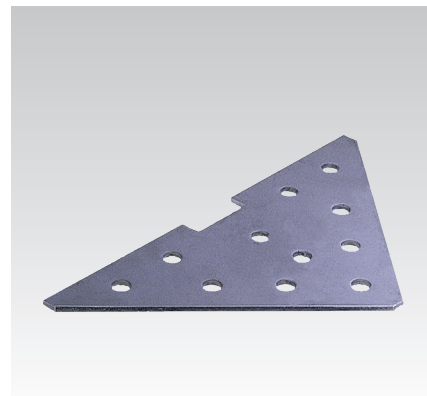
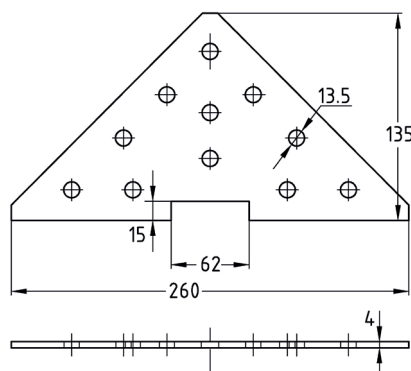
hot-dip galvanised

Application

- Support for MPC- and MPR-Wall hanger brackets where transverse forces occur

Your advantages

- Suitable for wall, ceiling and floor mounting
- Further mounting facilities for angle and joint connection of MPC- and MPR-Support channels
- Suitable for support of wall hanger brackets 38/40, 40/60, 41/21, 41/41



For profiles	Part no.	Sales unit	Pack unit
38/40-40/120, 41/21-41/124	159437	1	Pieces

**Suitable add-on parts for MPC-Support channels 38/40-40/120:**

Hexagon head bolt, M10 x 20 mm, hot-dip galvanised (part no. 105558)

MPC-Rail nut, M10, hot-dip galvanised (part no. 139500)

Suitable add-on parts for MPR-Support channels 41/21-41/124:

Hexagon head bolt, M10 x 20 mm, hot-dip galvanised (part no. 105558)

MPR-Threaded plate, M10, hot-dip galvanised (part no. 154190)

