

Channel connector

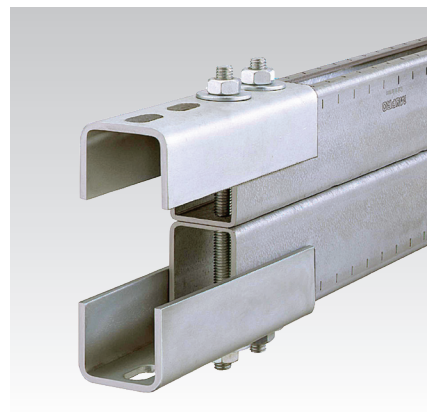
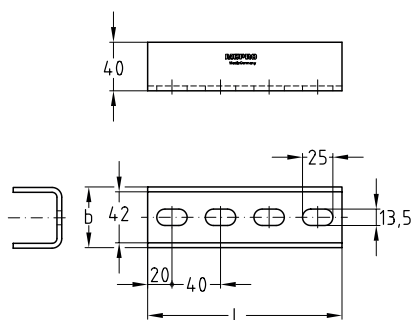
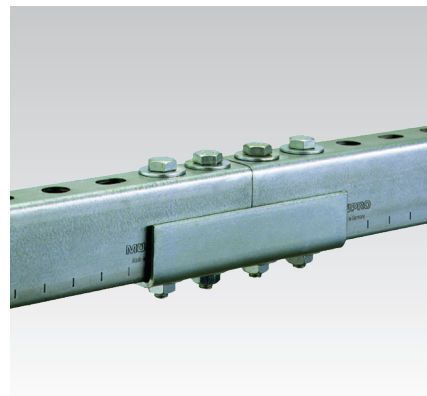
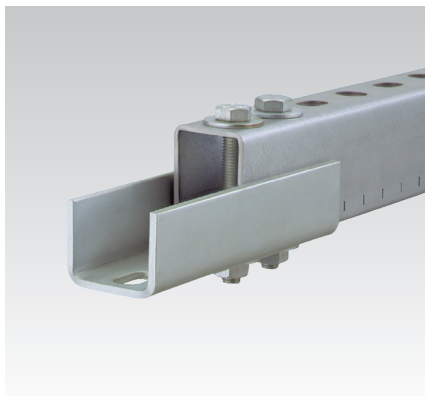
heavy-duty version, hot-dip galvanised

Application

- Quick butt-joint connection for MPC- and MPR-Support channels
- Suitable for outdoor use

Your advantages

- Enables exact alignment of the channels
- Four bolts provide a frictional joint
- For highly load-bearing connections:
 - form-locking connection of through fitting attachments by means of threaded pins or hexagon head bolts and hexagonal nuts
 - with 4 oblong holes, adapted to the hole pattern of the MPC-Support channels
- Also available in double length for heavy-duty connections



For profiles	Dimensions [mm]		Part no.	Sales unit	Pack unit
38/40-40/120, 41/21-41/124	b	L	120140	1	Pieces
	50	160			

