

Mounting angles

hot-dip galvanised

Application

- Solid fixing element for construction of pre-wall installations and shelves as well as for channel constructions for attachments of pipelines and air ducts without welding
- Also applicable for direct mounting on walls, ceilings or floors
- Suitable for outdoor use

Your advantages

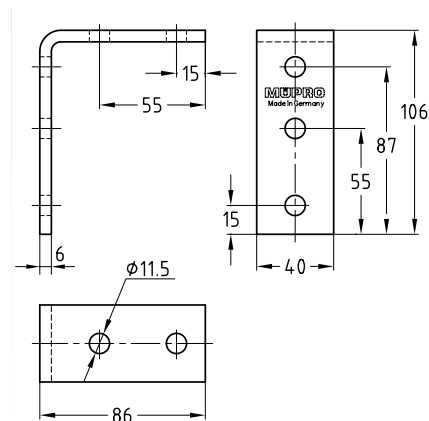
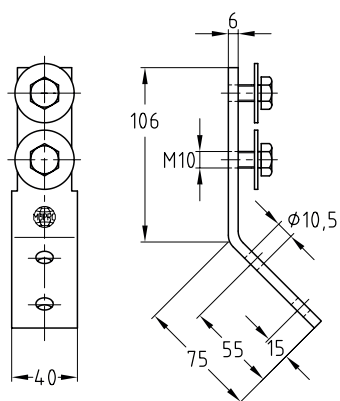
- Versatile in use due to oblong holes
- Versatile, e.g. as: support bracket, connecting element, angle bracket
- Multi-purpose component for professional, practical installation solutions



Mounting angle 45°



Mounting angle 90°



Design	For profiles	Suitable for	Accessories	Part no.	Sales unit	Pack unit
45°	38/40-40/120	MPC	2 Washers, 2 hexagon head bolts M10	118777	1	Pieces
90°	38/40-40/120, 41/21-41/124	MPC/MPR	-	118846	25	

