

## Mounting angle 90°

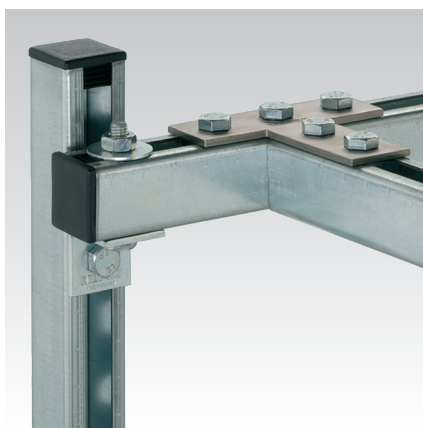
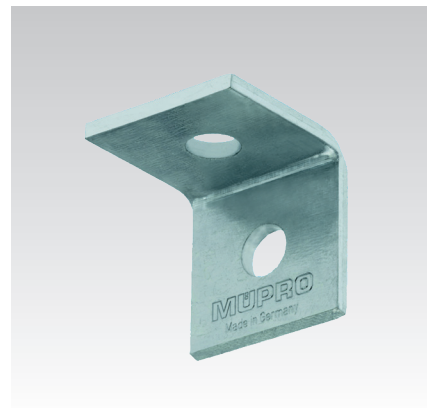
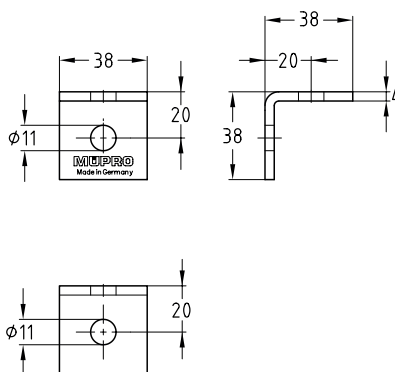
short, hot-dip galvanised

## Application

- Strong and good value connecting element for the construction of frames, shelves and supports for pre-wall installations
- Suitable for outdoor use

## Your advantages

- Creation of rigid structures without welding
- High flexibility and easy mounting
- Good adjustment to the widths of MPC- and MPR-Support channels



Design	For profiles	Part no.	Sales unit	Pack unit
90°	38/40-40/120, 41/21-41/124	118862	25	Pieces

## Mounting angle 90°

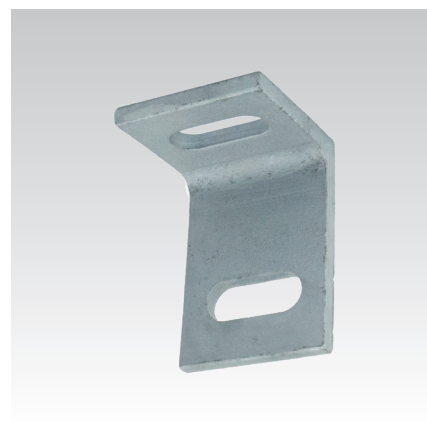
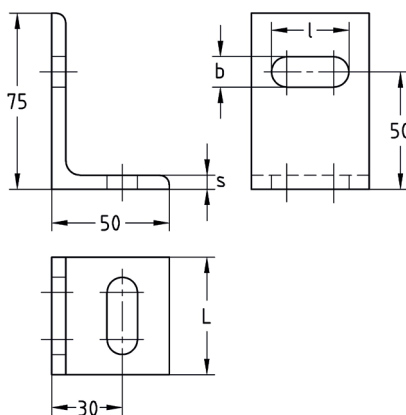
with long hole crosswise, hot-dip galvanised

## Application

- Stable bracket for mounting in connection with U-bolts or pipe clamps
- Suitable for outdoor use

## Your advantages

- Flexible when using pipe clamps via the flanges on the structure



Dimensions [mm]				Part no.	Sales unit	Pack unit
b	l	L	s			
13	33	50	6	168679	1	Pieces