

Angle- and T-connection plates

stainless steel

Application

- Strong connection elements for frames and pre-wall installations using the MPC- and MPR-System components

Your advantages

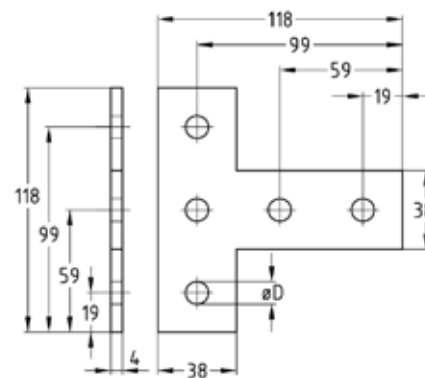
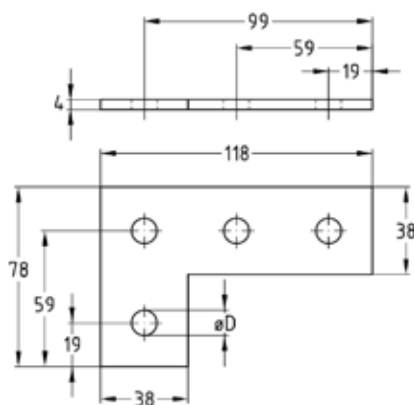
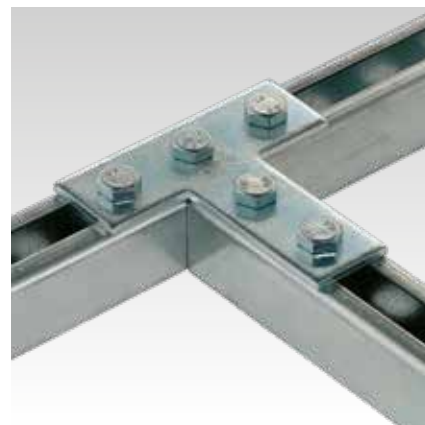
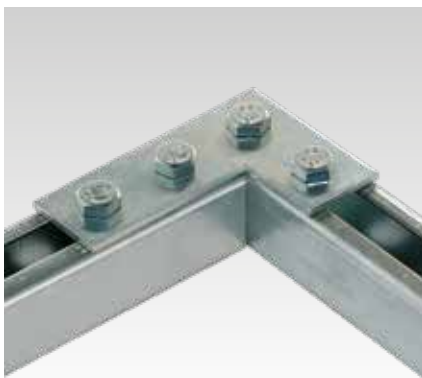
- Simple and quick connection of angles and T-connections
- The mounting plates enable frame construction in one plane in which the channel slots have the same alignment
- Hole spacings allow pass-through mounting using the MPC- and MPR-Support channels



Angle plate



T-connection plate



Type	For profiles	Hole diameter [mm]	Material	Part no.	Sales unit	Pack unit
Angle plate	38/40, 40/60, 41/21-41/124	11	V2A	127843	1	Pieces
		13.5	V4A	159473	10	
T-connection plate		11	V2A	130298	1	
		13.5	V4A	159474	10	