

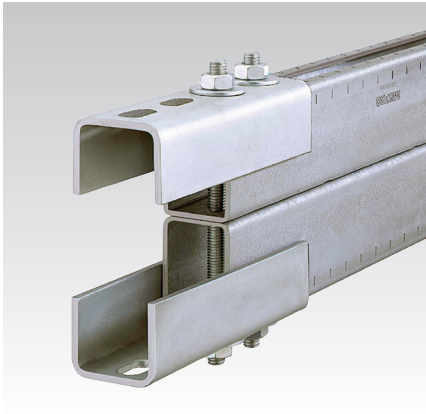
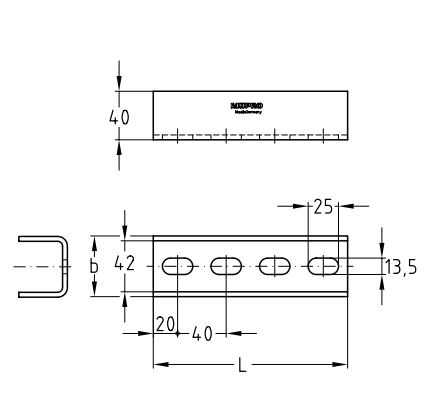
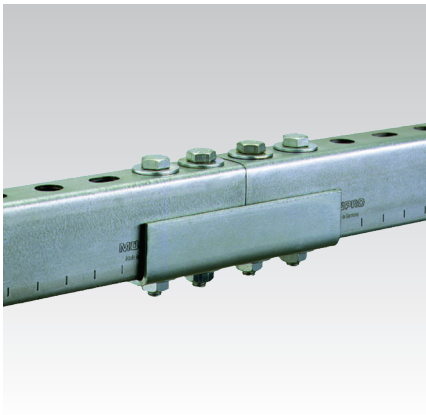
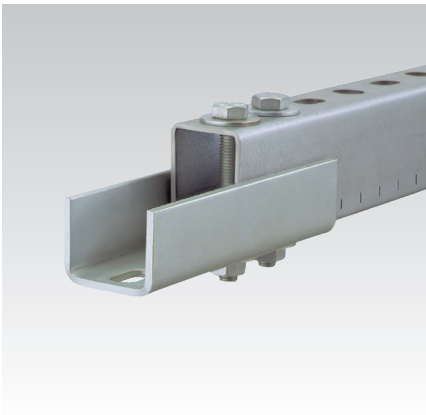
Channel connector
heavy-duty version, stainless steel

Application

- Quick butt-joint connection for MPC- and MPR-Support channels

Your advantages

- Enables exact alignment of the channels
- Four bolts provide a frictional joint
- Form-locking connection between channel and connector (passthrough installation)



For profiles	Material	Dimensions [mm]		Part no.	Sales unit	Pack unit
		b	L			
38/40, 40/60, 41/21-41/124	V4A	50	160	159475	1	Pieces

