

Mounting angle

stainless steel

Application

- Solid fixing element for construction of pre-wall installations and shelves as well as for channel constructions for attachments of pipelines and air ducts without welding
- Applicable for direct mounting on walls, ceilings or floors
- For MPC- and MPR-Support channels

Your advantages

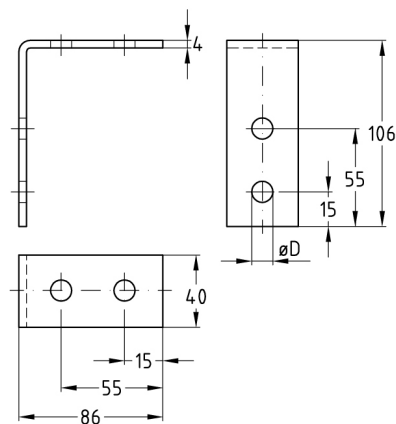
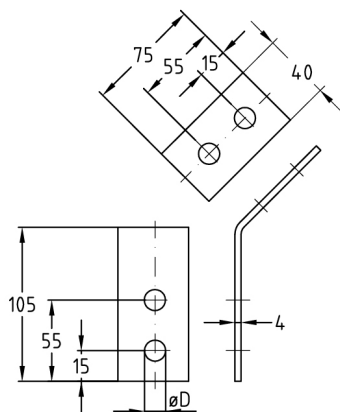
- Versatile, e.g. as: support bracket, connecting élément, angle bracket
- Multi-purpose component for professional, practical installation solutions



Mounting angle 45°



Mounting angle 90°



Design	For profiles	Hole diameter [mm]	Material V2A Part no.	Material V4A Part no.	Sales unit	Pack unit
45°	38/40, 40/60, 41/21-41/124	11	118757	118773	1	Pieces
		13.5	-	159471	10	
90°		11	118824	118858	1	