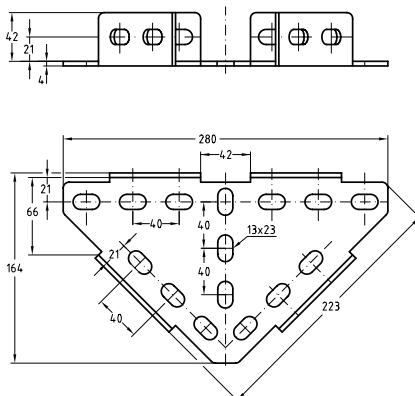


Construction brackets

stainless steel

Application

- Ideal connecting element for the construction of cross-beams, frames and shelving systems
- For direct mounting on ceilings, walls and floors or for installation with MPC- and MPR-Support channels used as: Angular support brackets, Angular load-bearing bracket, Basic prop, Angle bracket, Cross connection, Transverse support angle, Support angle, Connection element, Angular bracket



Type 2

Your advantages

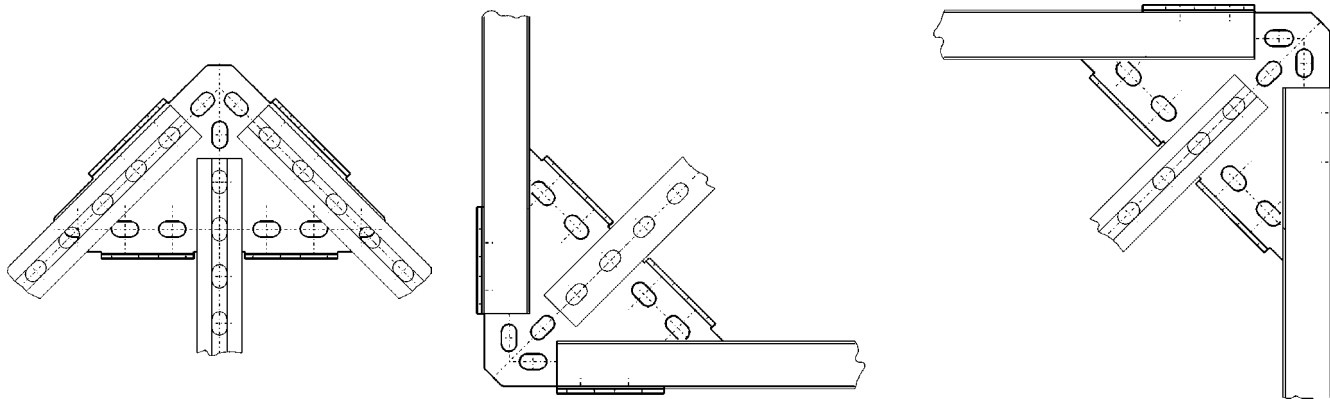
- Great variety of mounting possibilities when used with MPC- and MPR-Support channels
- Provides solid joint and angle connections
- Any arrangement of channel opening possible

Type	Design	For profiles	Material	Part no.	Sales unit	Pack unit
2	280 x 164 x 4 mm	38/40, 40/60, 41/21-41/124	V2A	113595	1	Pieces

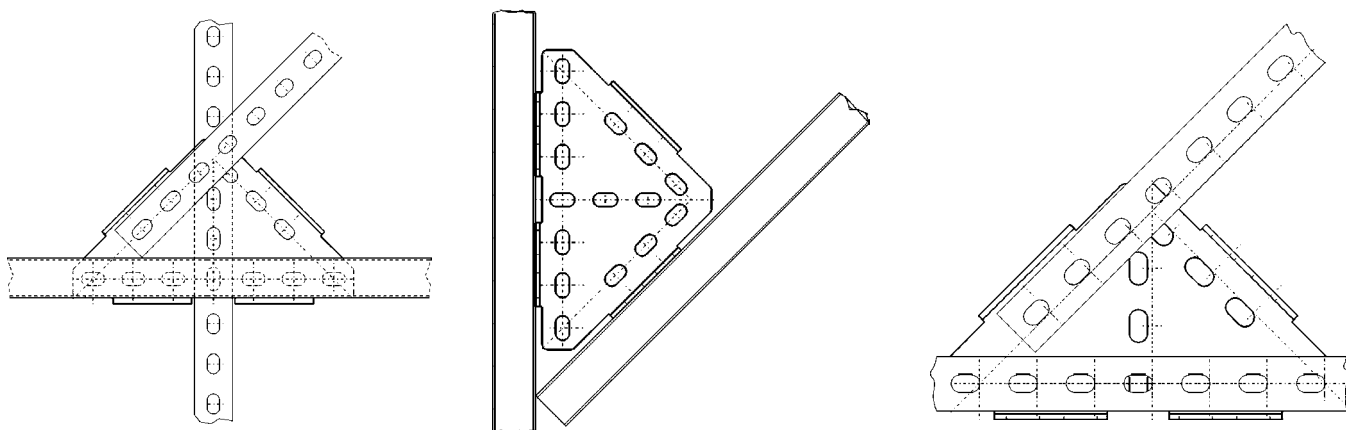


Construction brackets

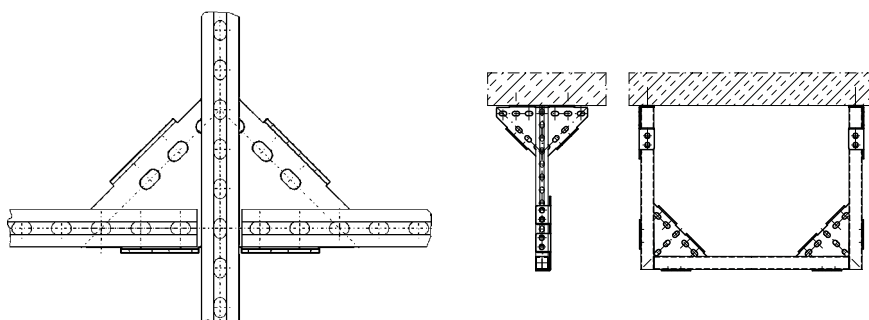
stainless steel



As junction plate, as the mounting slot of the MPC-Support channels can be aligned in any position. This guarantees a variety of mounting arrangements for an optimum solution to any problem is guaranteed



As 45° support, optional attachment with internally or externally positioned MPC-Support channel



As a cross-connection, also realizable with continuous MPC-Support channels

As transverse support, for additional lateral rigidity

