

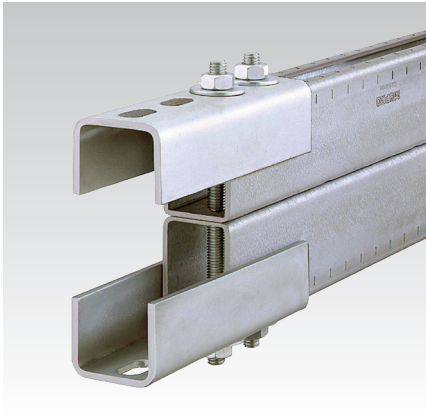
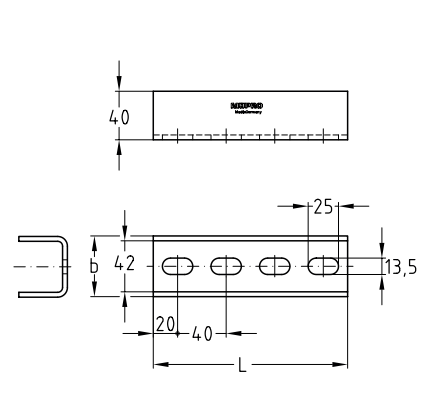
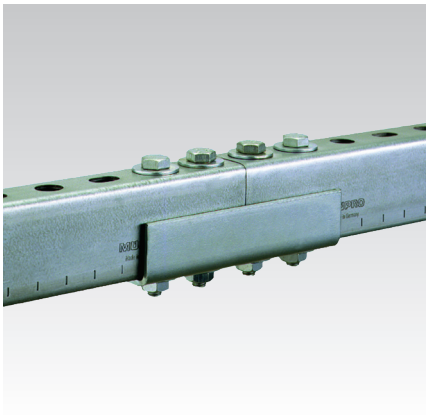
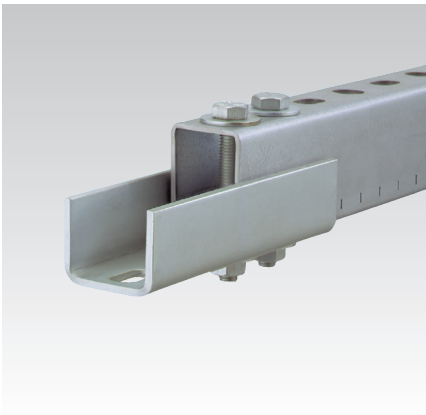
Channel connector
heavy-duty version, galvanised

Application

- Quick butt-joint connection for MPC- and MPR-Support channels

Your advantages

- Enables exact alignment of the channels
- Four bolts provide a frictional joint
- Form-locking connection between channel and connector (passthrough installation)
- Also available in double length for heavy-duty connections



For profiles	Dimensions [mm]		Part no.	Sales unit	Pack unit
38/40-40/120, 41/21-41/124	b	L	120136	1	Pieces
	50	160			