

### Mounting angle 90°

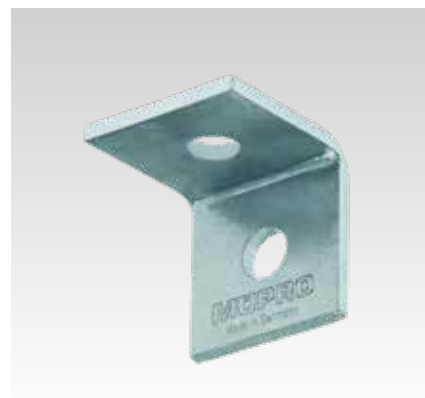
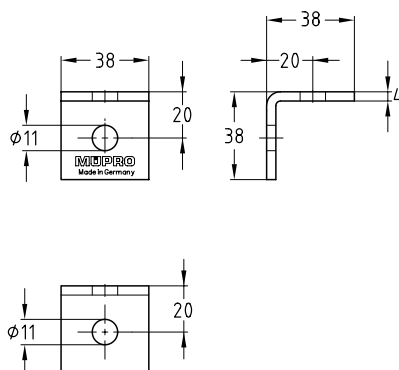
short, galvanised

#### Application

- Strong and good value connecting element for the construction of frames, shelves and supports for pre-wall installations

#### Your advantages

- Creation of rigid structures without welding
- High flexibility and easy mounting
- Good adjustment to the widths of MPC- and MPR-Support channels



Design	For profiles	Part no.	Sales unit	Pack unit
90°	38/24-40/120, 41/21-41/124	118820	10	Pieces