

### Construction brackets

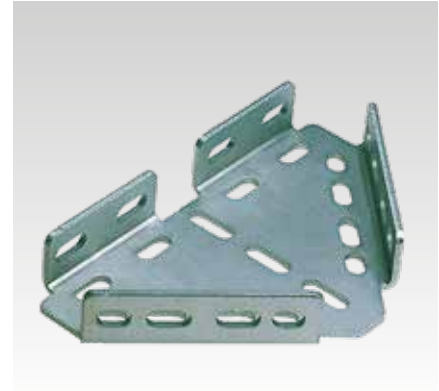
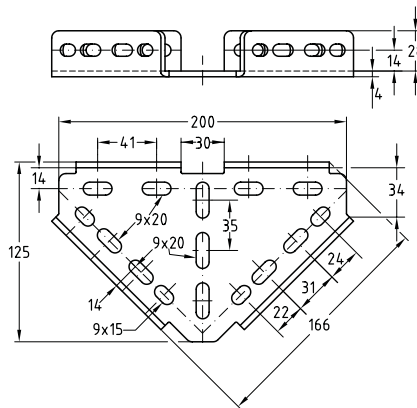
galvanised

#### Application

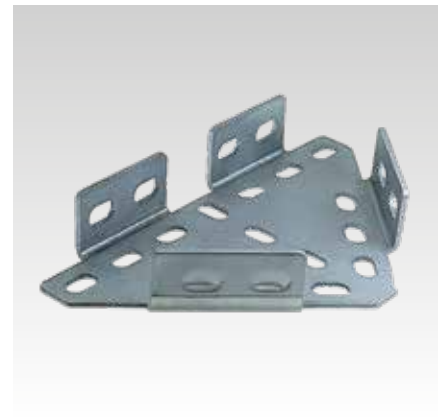
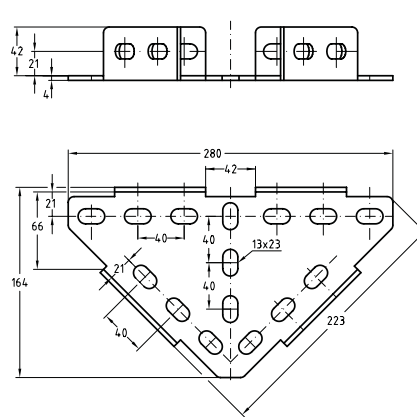
- Ideal connecting element for the construction of cross-beams, frames and shelving systems

#### Your advantages

- Great variety of mounting possibilities when used with MPC- and MPR-Support channels
- Provides solid joint and angle connections
- Any arrangement of channel opening possible
- For direct mounting on ceilings, walls and floors or for installation with MPC- and MPR-Support channels as: Angular support brackets, Angular load-bearing brackets, Floor supports, Junction brackets, Cross connections, Transverse support angles, Connection element



Type 1



Type 2

Type	Design	For profiles	Suitable for	Part no.	Sales unit	Pack unit
1	200 x 125 x 4 mm	27/18, 28/30	MPC	113598	1	Pieces
2	280 x 164 x 4 mm	38/24-40/120, 41/21-41/124	MPC/MPR	113601		