

## Cramping connector

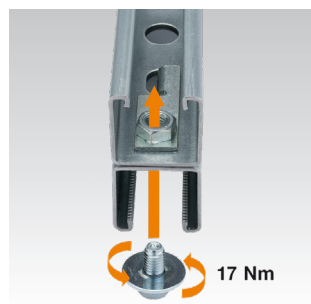
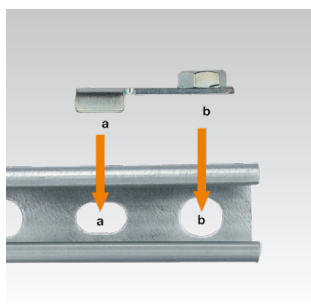
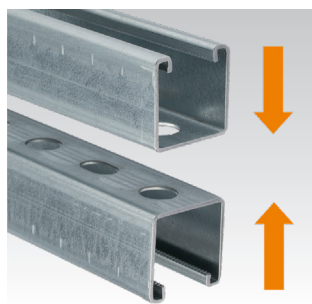
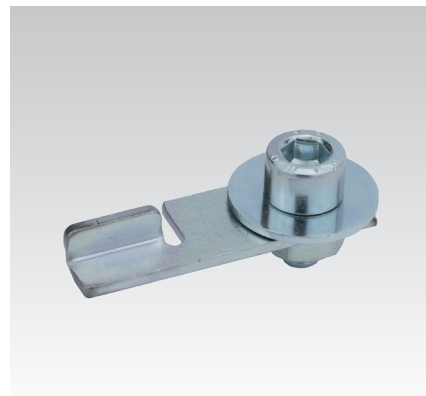
galvanised

## Application

- Connection of MPC- and MPR-Support channels at the rear perforations for creating H-profiles
- For use in dry interiors

## Your advantages

- Easy connection of MPC- and MPR-Support channels back to back
- Secure fixing via the rear perforation
- Perfect solution for creating H-profiles on site



Allen bolt spanner width [mm]	Part no.	Sales unit	Pack unit
8	163050	25	Pieces



Please take care of the mounting instruction which is enclosed with the product. It is recommended to install the connector with a max. fastening distance of 160 mm.

## VIDEO TIP

**MPC/MPR Cramping connector – short-term production of H-profiles:** the video shows how H-profiles can be put together quickly and conveniently from MPC- and MPR-support channels using the cramping connector.

