

MPR-Angle connector 45° type S+

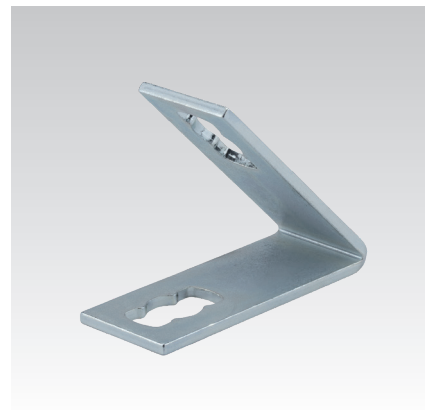
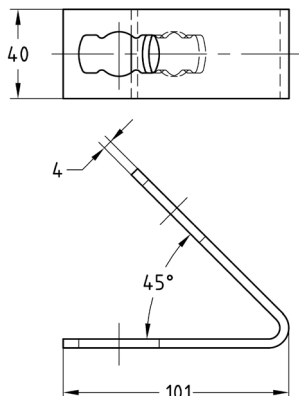
hot-dip galvanised

Application

- Connecting element for on-the-wall installations, shelves and rail constructions, preferably by using the MPR-Support channel 41/41

Your advantages

- Fast and simple installation of angled joints in combination with the MPR-Connection lock type S+



Design	For profiles	Part no.	Sales unit	Pack unit
1+1	41/21-41/124	165880	10	Pieces

MPR-Angle connectors 90° type S+

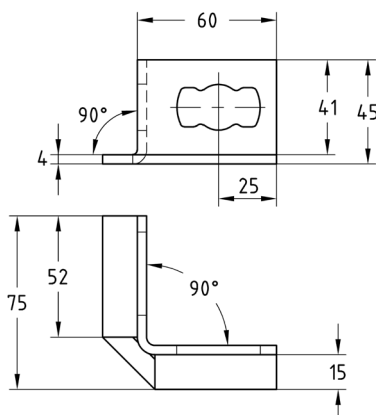
hot-dip galvanised

Application

- Stable angle connector for 90° connections in cramped mounting situations
- For indoor and outdoor use

Your advantages

- Fast and simple installation of 90° corner joints with the MPR-Connection lock type S+
- The angle connector allows a fast and stable connection, especially of MPR-Support channels 41/21



Design	For profiles	Part no.	Sales unit	Pack unit
1+1	41/21-41/124	175786	25	Pieces

