

MPR-Quick fasteners type S+

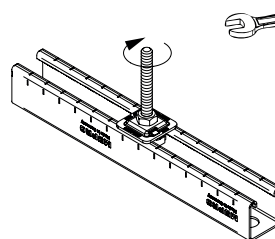
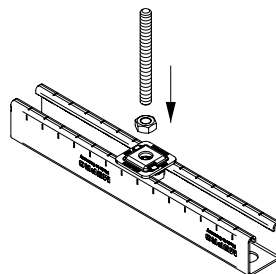
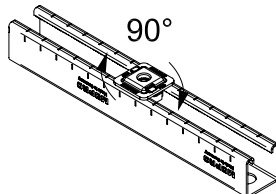
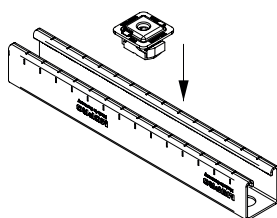
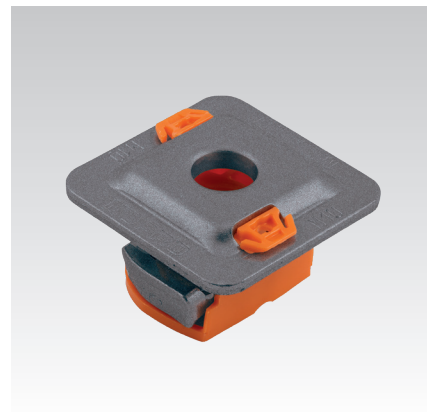
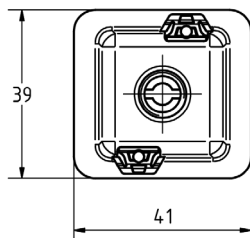
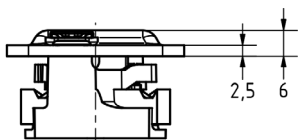
zinc-nickel

Application

- For safe and fast connecting of pipe clamps and mounting parts in the rail slot of MPR-Support channels
- For indoor and outdoor use

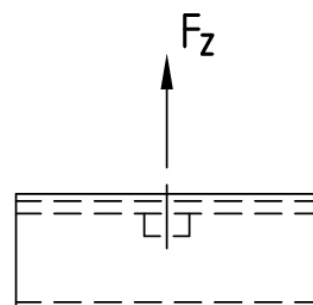
Your advantages

- Simply screw into the rail slot - done
- Safely retained after screwing in, alignable until screw is tightened
- Secure interlocking design for a positive connection with the MPR-Support channels
- No shifting even on vertical rail slots



Features

Material thickness of support channel [mm]	Max. recommended tensile load F_z [N]			Tightening torque [Nm]		
	M8	M10	M12	M8	M10	M12
2.0	4,500	4,500	4,500	9	17	29
2.5		5,000	5,000			



For profiles	Connecting thread	Part no.	Sales unit	Pack unit
41/21-41/124	M8	165904	25	Pieces
	M10	165905		
	M12	165906		

