

### MPR-Diagonal struts type S+

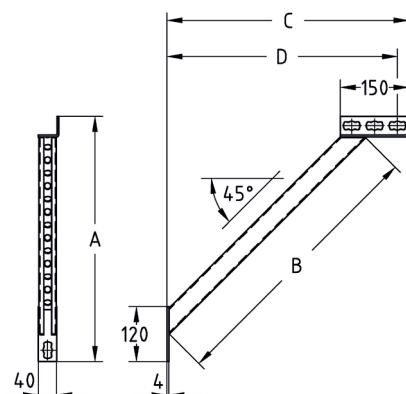
hot-dip galvanised

#### Application

- Supporting strut for reinforcement of corner joints in structures made of MPR-Support channels and MPR-Connection lock type S+
- Also suitable for lateral support of consoles, e.g. for use with fixed points
- For indoor and outdoor use

#### Your advantages

- Easily connected with the MPR-Support channels due to installation with the MPR-Connection lock type S+
- Various lengths available for different on-site installation conditions



For profiles	Length [mm]	Dimensions [mm]				Part no.	Sales unit	Pack unit
		A	B	C	D			
41/21-41/124	440	420	440	405	380	165866	1	Pieces
	900	741	900	734	709	165868		

### MPR-Channel connector type S+

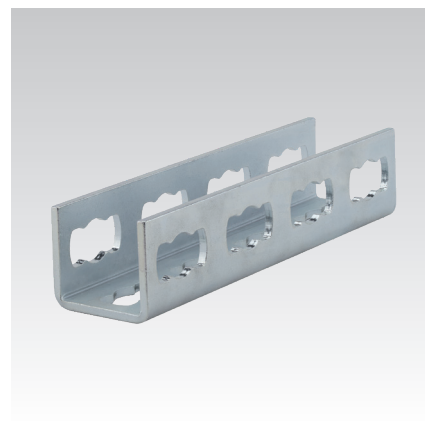
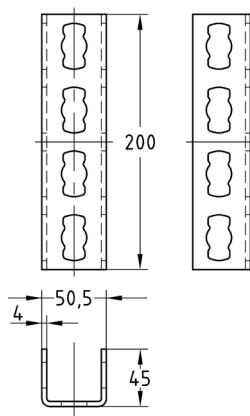
heavy-duty version, hot-dip galvanised

#### Application

- Fast butt-joining of MPR-Support channels and MPR-Connection lock type S+
- For indoor and outdoor use

#### Your advantages

- Enables exact alignment of the channels
- Frictional connection via 4 connection locks type S+
- Easy handling thanks to installation with connection lock type S+



For profiles	Part no.	Sales unit	Pack unit
41/21-41/124	165897	1	Pieces

