

## MPR-Saddle support crosswise type S+

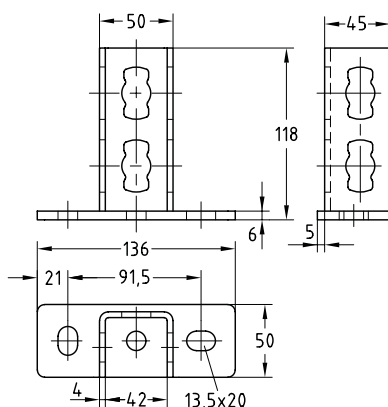
hot-dip galvanised

**Application**

- Simple assembly of strong cross-beams using MPR-Support channels
- Applicable for cramped installation conditions in shafts and ducts
- For indoor and outdoor use

**Your advantages**

- Easily connected with the MPR-Support channels due to installation with the MPR-Connection lock type S+
- Good load transfer due to the high bending stiffness of the saddle connection
- Ideal connecting element for channel constructions especially of support channels 41/41
- Elongated- and cross-holes for direct attachment to the building structure



For profiles 41/21-41/124	Part no. 165875	Sales unit 1	Pack unit Pieces
------------------------------	--------------------	-----------------	---------------------

## MPR-Saddle support crosswise S+

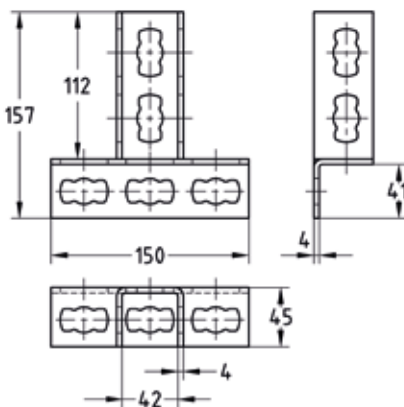
for channel support fitting, hot-dip galvanised

**Application**

- Simple assembly of strong cross-beams using MPR-Support channels
- Applicable for cramped installation conditions in shafts and ducts
- For indoor and outdoor use

**Your advantages**

- Easily connected with the MPR-Support channels due to installation with the MPR-Connection lock type S+
- Good load transfer due to the high bending stiffness of the saddle connection
- Ideal connecting element for channel constructions especially of support channels 41/41



For profiles 41/21-41/124	Part no. 165871	Sales unit 1	Pack unit Pieces
------------------------------	--------------------	-----------------	---------------------