

## MPR-Mounting angles 135° type S+

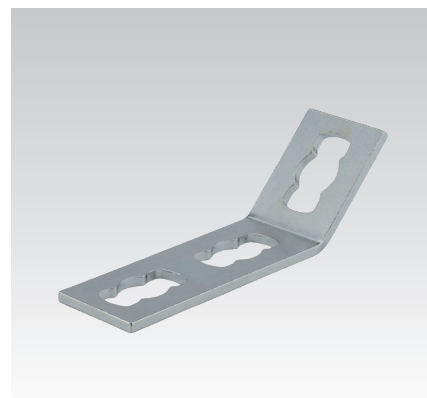
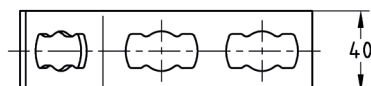
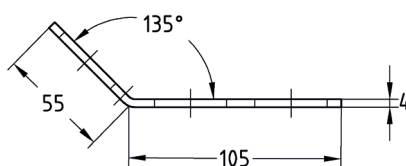
hot-dip galvanised

### Application

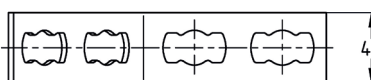
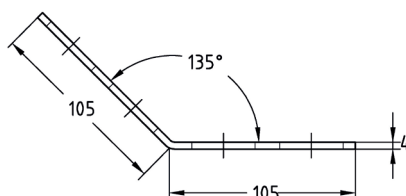
- Solid fixing element for construction of pre-wall installations and shelves as well as for channel constructions for attachments of pipelines and air ducts without welding
- For indoor and outdoor use

### Your advantages

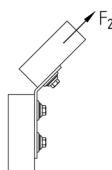
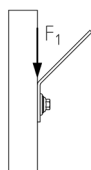
- Fast and simple installation of angled joints with the MPR-Connection lock type S+
- Flexible use due to up to 4 connection locks depending on the design
- Increased load transfer when using 2 connection locks per leg



MPR-Mounting angle 135° 1+2 type S+



MPR-Mounting angle 135° 2+2 type S+



### Features

Design	Permissible load F <sub>1</sub> [N]	Permissible load F <sub>2</sub> [N]
1+2	2,000	1,500
2+2	4,000	3,000

Design	For profiles 41/21-41/124	Part no.	Sales unit	Pack unit
1+2		165891	10	Pieces
2+2		165892		

