

MPR-3D-Connectors type S+

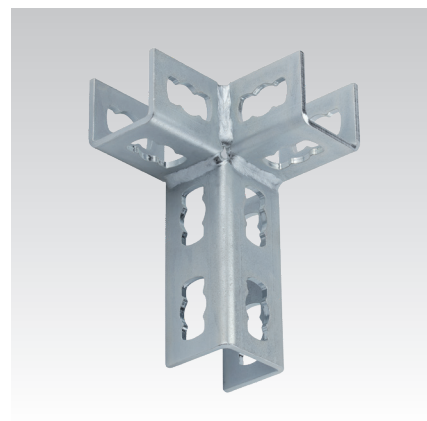
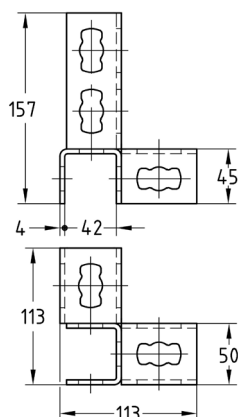
hot-dip galvanised

Application

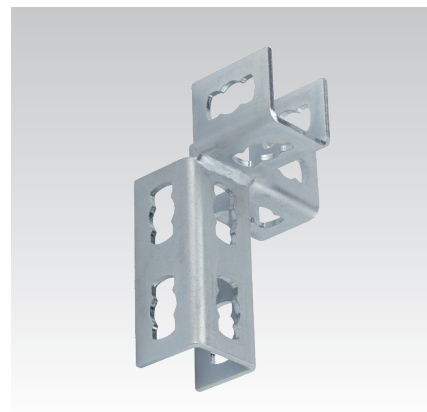
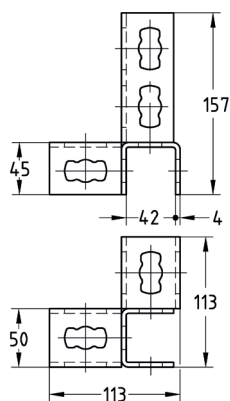
- Fasteners for three-dimensional structures in on-the-wall installations, shelves and rail constructions
- For indoor and outdoor use

Your advantages

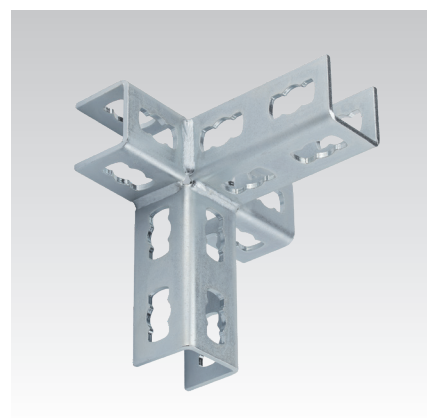
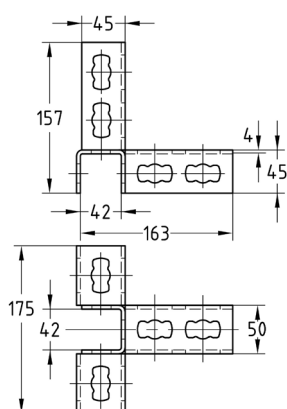
- Fast and simple installation of three-dimensional connections joints in combination with the MPR-Connection lock type S+
- Flexible arrangement of the rail slot on MPR-Support channels 41/41 with middle or corner connectors type S+
- Versatile designs options using three different connector designs



MPR-Corner connector left type S+



MPR-Corner connector right type S+



MPR-Mid connector type S+

Design	For profiles	Part no.	Sales unit	Pack unit
Corner connector left	41/21-41/124	165885	10	Pieces
Corner connector right		165886		
Mid connector		165887		