

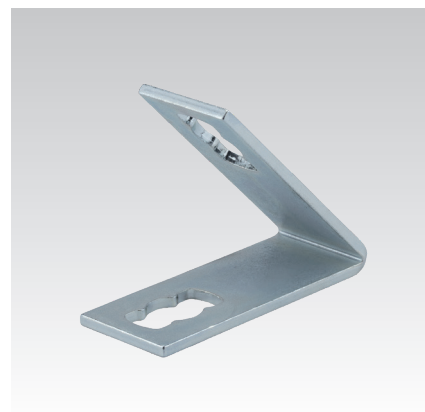
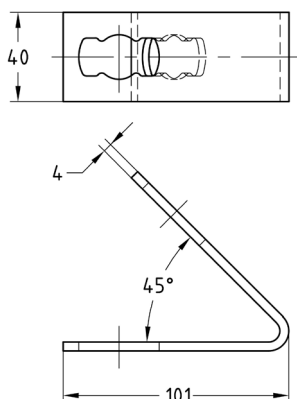
MPR-Angle connector 45° type S+ galvanised

Application

- Connecting element for on-the-wall installations, shelves and rail constructions, preferably by using the MPR-Support channel 41/41

Your advantages

- Fast and simple installation of angled joints in combination with the MPR-Connection lock type S+



Design	For profiles	Part no.	Sales unit	Pack unit
1+1	41/21-41/124	165830	25	Pieces