

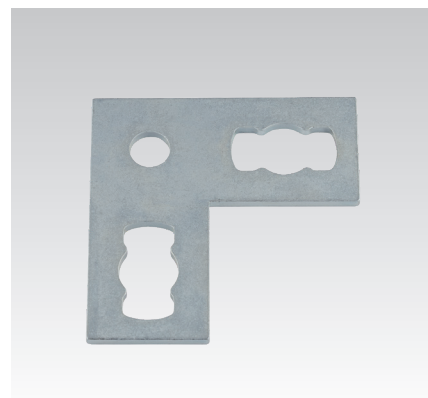
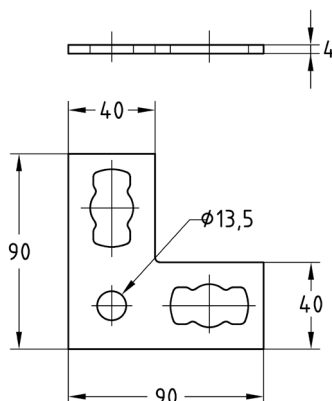
MPR-Connection plates type S+ galvanised

Application

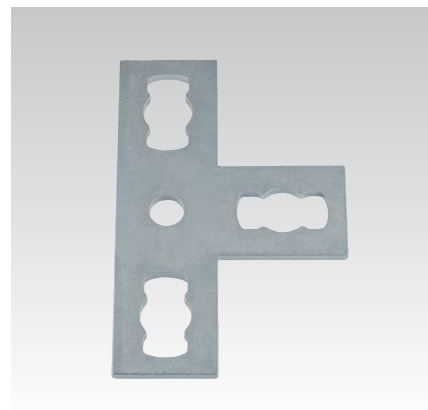
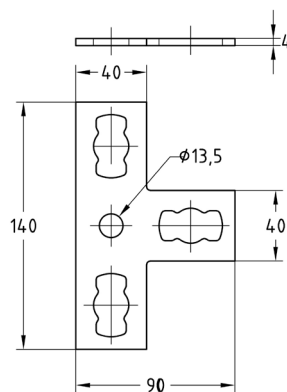
- Strong connection elements for frames and pre-wall installations using the MPR-System components
- For indoor use

Your advantages

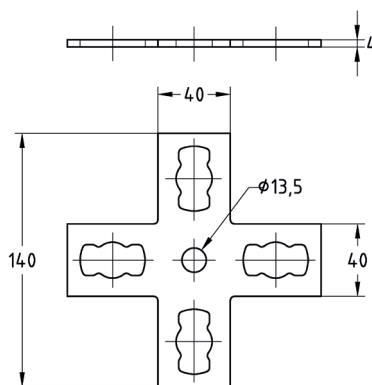
- Simple and quick connection of angle connections, cross connections and T-connections
- The mounting plates enable frame construction in one plane in which the channel slots have the same alignment
- Quick and simple attachment in combination with the MPR-Connection lock type S+
- Good adaptation to rail widths; in the case of frame constructions, the corners remain free



MPR-Angle plate 90° type S+



MPR-T-connection plate type S+



MPR-Cross connection plate type S+

| Type | For profiles | Part no. | Sales unit | Pack unit |
|------------------------|--------------|----------|------------|-----------|
| Angle plate 90° | 41/21-41/124 | 165829 | 25 | Pieces |
| T-connection plate | | 165827 | | |
| Cross connection plate | | 165828 | | |