

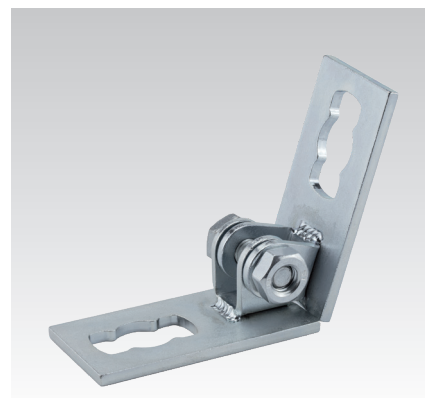
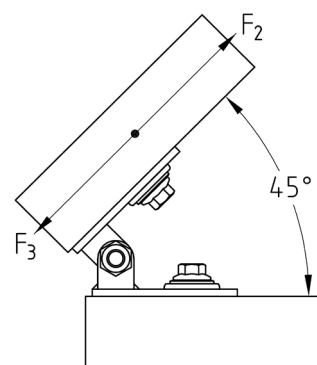
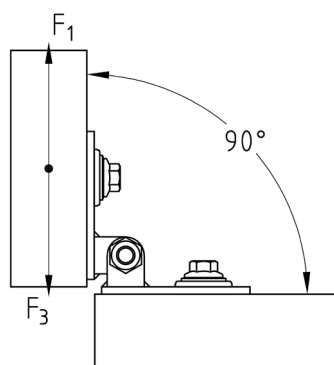
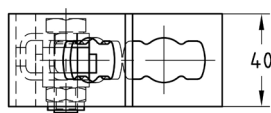
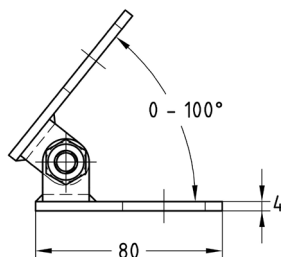
### MPR-VARIO joint type S+ galvanised

#### Application

- Flexible use for connection of MPR-Support channels, where different angle settings are required, such as for supports on brackets, etc.
- For indoor use

#### Your advantages

- Pivot angle from 0° to 100° for fast and flexible adaptation to a wide variety of attachment situations - saves time and costs at the construction site
- Cost savings can be realized in the area of stockkeeping, as a variety of support solutions can be realized with only one item
- Stable design of the joint for optimal transmission of force
- Fast and simple installation using connection locks type S+



#### Features

Permissible load $F_1$ [N]	750
Permissible load $F_2$ [N]	500
Permissible load $F_3$ [N]	4,000
Tightening torque [Nm]	40

For profiles 41/21-41/124	Part no. 165819	Sales unit 10	Pack unit Pieces
------------------------------	--------------------	------------------	---------------------