

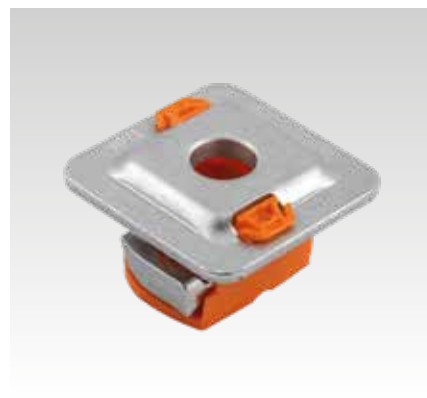
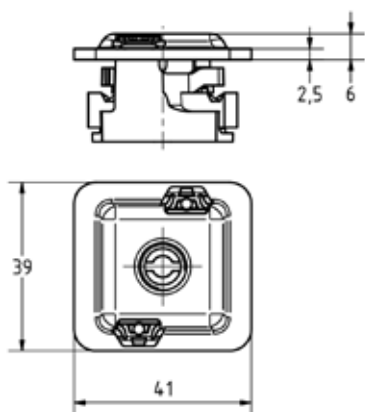
MPR-Quick fasteners type S+ galvanised

Application

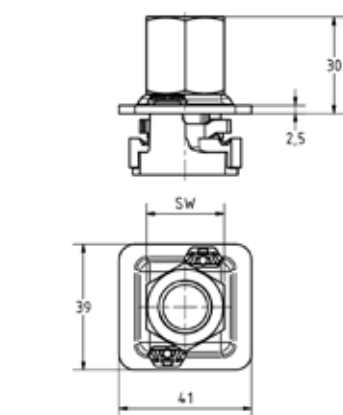
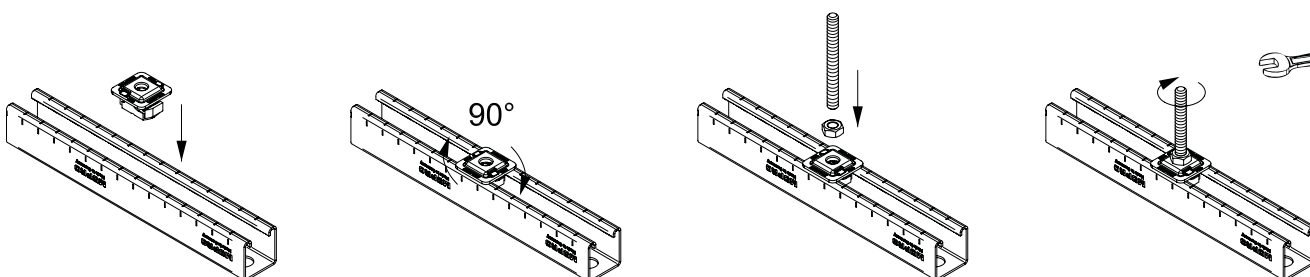
- For safe and fast connecting of pipe clamps and mounting parts in the rail slot of MPR-Support channels
- For indoor use

Your advantages

- Simply screw into the rail slot - done
- Safely retained after screwing in, alignable until screw is tightened
- Secure interlocking design for a positive connection with the MPR-Support channels
- No shifting even on vertical rail slots



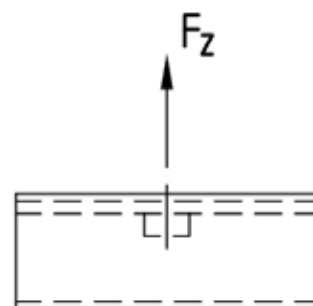
Version M8, M10, M12

Version M16 + R $\frac{1}{2}$ "

Features



Material thickness of support channel [mm]	Max. recommended tensile load F _z [N]					Tightening torque [Nm]				
	M8	M10	M12	M16	R $\frac{1}{2}$ "	M8	M10	M12	M16	R $\frac{1}{2}$ "
1.5	3,100	3,100	3,100	-	-	9	17	29	-	-
2.0	4,500	4,500	4,500	4,500	4,500				29	29
2.5		5,000	5,000	5,000	5,000					



For profiles	Connecting thread	Spanner width [mm]	Part no.	Sales unit	Pack unit
41/21/1.5, 41/21/2.0, 41/41/2.0, 41/41/2.5, 41/62/2.5, 41/42/2.0, 41/82/2.0, 41/124/2.5	M8	-	165680	50	Pieces
	M10		165679		
	M12		165678		
41/21/2.0, 41/41/2.0, 41/41/2.5, 41/62/2.5, 41/42/2.0, 41/82/2.0, 41/124/2.5	M16	22	165677		
	R $\frac{1}{2}$ "	27	165676		