

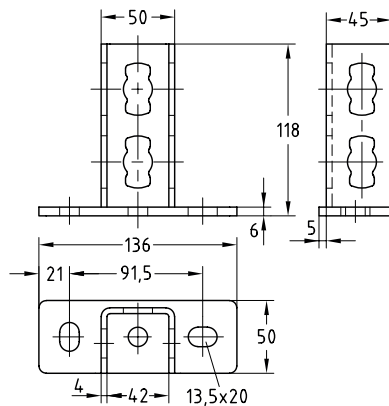
MPR-Saddle support crosswise type S+ galvanised

Application

- Simple assembly of strong cross-beams using MPR-Support channels
- Applicable for cramped installation conditions in shafts and ducts
- For indoor use

Your advantages

- Easily connected with the MPR-Support channels due to installation with the MPR-Connection lock type S+
- Good load transfer due to the high bending stiffness of the saddle connection
- Ideal connecting element for channel constructions especially of support channels 41/41
- Elongated- and cross-holes for direct attachment to the building structure



For profiles	Part no.	Sales unit	Pack unit
41/21-41/124	165825	10	Pieces

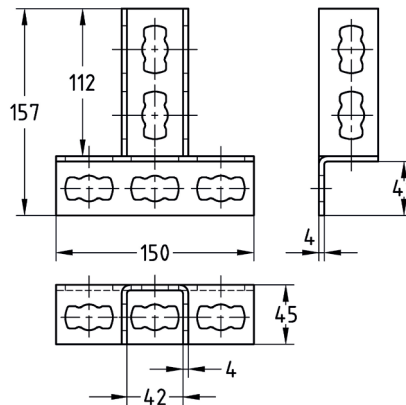
MPR-Saddle support crosswise type S+ for channel support fitting, galvanised

Application

- Simple assembly of strong cross-beams using MPR-Support channels
- Applicable for cramped installation conditions in shafts and ducts
- For indoor use

Your advantages

- Easily connected with the MPR-Support channels due to installation with the MPR-Connection lock type S+
- Good load transfer due to the high bending stiffness of the saddle connection
- Ideal connecting element for channel constructions especially of support channels 41/41



For profiles	Part no.	Sales unit	Pack unit
41/21-41/124	165821	10	Pieces