

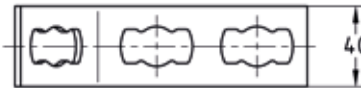
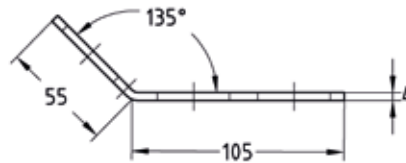
### MPR-Mounting angles 135° type S+ galvanised

#### Application

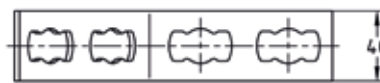
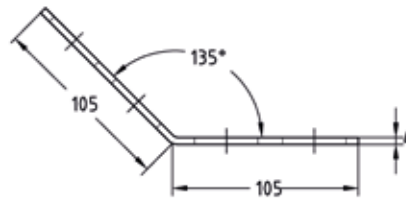
- Solid fixing element for construction of pre-wall installations and shelves as well as for channel constructions for attachments of pipelines and air ducts without welding
- For indoor use

#### Your advantages

- Fast and simple installation of angled joints with the MPR-Connection lock type S+
- Flexible use due to up to 4 connection locks depending on the design
- Increased load transfer when using 2 connection locks per leg



MPR-Mounting angle 135° 1+2 type S+



MPR-Mounting angle 135° 2+2 type S+



#### Features

Material thickness of support channel [mm]	Design	Permissible load F <sub>1</sub> [N]	Permissible load F <sub>2</sub> [N]
1.5	1+2	2,500	1,000
	2+2	4,000	2,000
2.0, 2.5	1+2		1,500
	2+2	8,000	3,000

Design	For profiles	Part no.	Sales unit	Pack unit
1+2	41/21-41/124	165841	25	Pieces
2+2		165842		