

MPR-VARIO-Saddle support

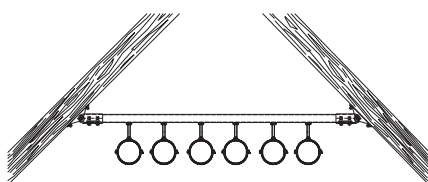
hot-dip galvanised

Application

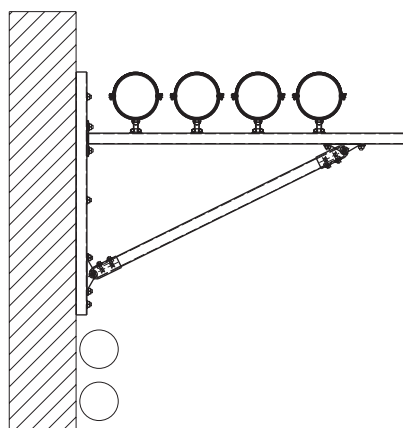
- Ideal for attachment to inclined roof trusses, vaults and in round cable shafts
- Suitable for outdoor use

Your advantages

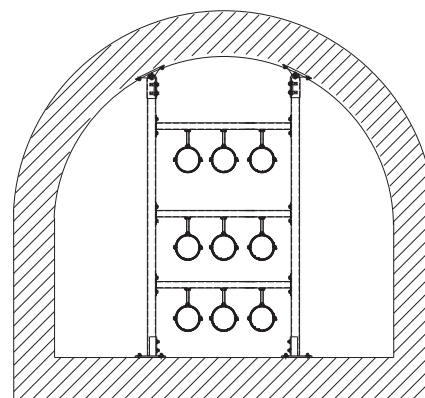
- Variable angle adjustment possible during installation
- Simple and quick installation due to pre-installed screws and MPR-Threaded plate
- Attachment to the slot of support channels 41/41 possible in all directions
- Positive-fit joining due to interlocking MPR-Support channels and MPR-Threaded plates



Attachment of a pipe run to an inclined roof truss

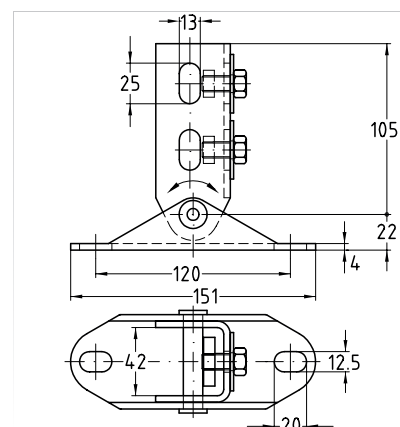


Pipes installed on an wall hanger bracket with diagonal strut



Installation of brackets in vaults or round cable ducts and shafts

Completely pre-assembled:
1 MPR-VARIO-Saddle support,
2 MPR-Threaded plates M10,
2 Hexagonal head bolts M10,
2 Washers



For profiles	Min. angle [°]	Part no.	Sales unit	Pack unit
41/21-41/62	20	160007	1	Pieces