

### MPR-Clamp brackets

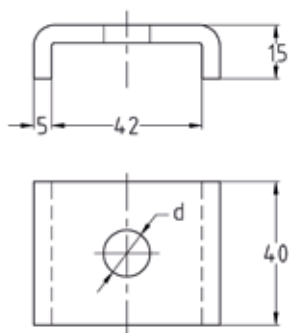
heavy-duty version, stainless steel

#### Application

- For safe force transmission when installing MPR-Support channels together with threaded rods, anchor plugs and screws

#### Your advantages

- Heavy-duty type for transferring large forces
- Safe, folded edge prevents expansion of the rail slot



Heavy-duty version

For profiles	For thread	Hole diameter [mm]	Material	Part no.	Sales unit	Pack unit
41/21/2.0, 41/41/2.0, 41/62/2.5, 41/82/2.0, 41/124/2.4	M10	11	V4A	154450	10	Pieces
	M12	13		155638		

### MPR-Protection caps

#### Application

- Plastic protection cap for mounting on open ends of the MPR-Support channels

#### Your advantages

- Visually clean finish of the MPR-Support channels protects from injury
- Weather-resistant plastic material for long service life



For profiles	Part no.	Sales unit	Pack unit
41/21, 41/42	170506	100	Pieces
41/41, 41/82	170508	50	
41/62, 41/124	170509	25	

### Washers

for MPR-Support channels, stainless steel

For thread	Outer diameter [mm]	Thickness [mm]	Material	Part no.	Sales unit	Pack unit
M8	40	3	V4A	154454	100	Pieces
M10				154455		
M12				154456		

