

MPR-Girder cleats

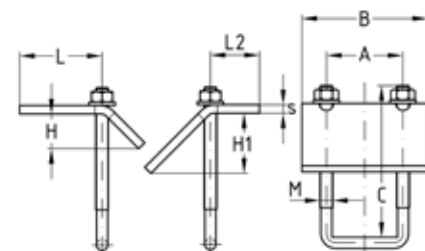
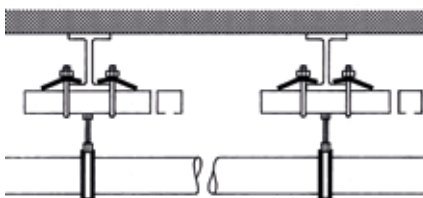
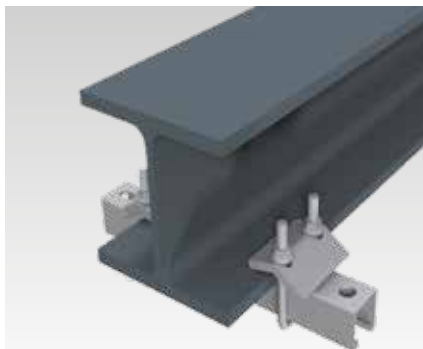
galvanised

Application

- Attachment of MPR-Support channels to steel girders without drilling or welding
- For use in dry interiors

Your advantages

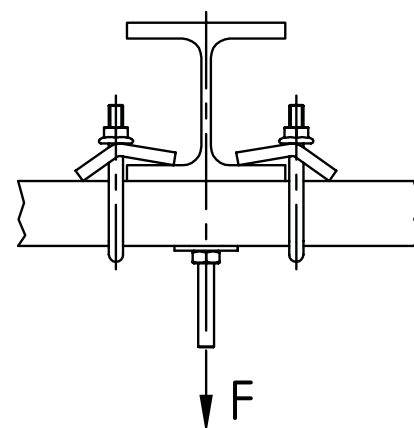
- Ideal solution for attachment of MPR-Support channels to steel girders
- Allows subsequent adjustment of the channels along and across the supporting beam
- Suitable for flange thicknesses of common support profiles
- Easy to install, pre-assembled kit
- Proper attachment of suspended loads on girders
- Girder cleats M8 or M10 VdS approved (please observe the profile size)



Features

VdS
G 413048

| For profiles | Thread U-brackets | Max. permitted loading/pair with hammer head fasteners [N] | | | |
|---------------------------------|-------------------|--|-------|-------|-------|
| | | M8 | M10 | M12 | M16 |
| 41/21/2.0, 41/41/2.0, 41/42/2.0 | M8 | 4,500 | 4,500 | 4,500 | 4,500 |
| 41/41/2.5 | M10 | | 5,000 | 5,000 | 5,000 |
| 41/21/2.0, 41/41/2.0, 41/42/2.0 | | | 4,500 | 4,500 | 4,500 |
| 41/41/2.5 | | | 5,000 | 5,000 | 5,000 |
| 41/62/2.5 | | | 4,500 | 4,500 | 4,500 |
| 41/82/2.0 | | | 5,000 | 5,000 | 5,000 |
| 41/124/2.5 | | | | | |



Proof of usability

| MPR-Girder cleats | Profiles | For threaded connection with hammer head fasteners, quick fasteners type S+ M8, M10, M12 |
|-------------------|----------------|--|
| M8 | 41/2.0 | (M8), M10, M12, M16 |
| M10 | 41/2.0, 41/2.5 | |

| For profiles | Max. clamping thickness [mm] | Thread | Spanner width [mm] | Dimensions [mm] | | | | | | | | Part no. | Sales unit | Pack unit |
|---------------------|------------------------------|--------|--------------------|-----------------|----|-----|------|------|------|------|---|----------|------------|-----------|
| | | | | A | B | C | H | H1 | L | L2 | s | | | |
| 41/21, 41/41, 41/42 | 22 | M8 | 13 | 48 | 70 | 90 | 17 | 24.5 | 38.2 | 27.2 | 6 | 151992 | 20 | Pieces |
| | | M10 | 15 | 50 | 80 | | 18.5 | | 39.7 | 30.7 | 8 | 151095 | 15 | |
| 41/62, 41/82 | | | | | | 130 | | | | | | 151096 | | |
| 41/124 | | | | | | 170 | | | | | | 151993 | | |